

| | |
|----------|-------------|
| Rwy Idg | 5802 |
| TDZE | 550 |
| Apt Elev | 559 |

RNAV (GPS) RWY 28

FREDERICK DOUGLASS/GREATER ROCHESTER INTL (ROC)

V For uncompensated Baro-VNAV systems, LNAV/VNAV NA below -18°C (0°F) or above 54°C (130°F).
A DME/DME RNP-0.3 NA.
 Multiple unshielded lights in final approach area.
 For inop MALSR, increase LPV Cats A/B visibility to RVR 5500 and Cats C/D visibility to 2.
 Helicopter visibility reduction below RVR 4000 NA.

MISSED APPROACH:
Climb to 3000 direct
CEMIG and on track
262° to MONCK
and hold.

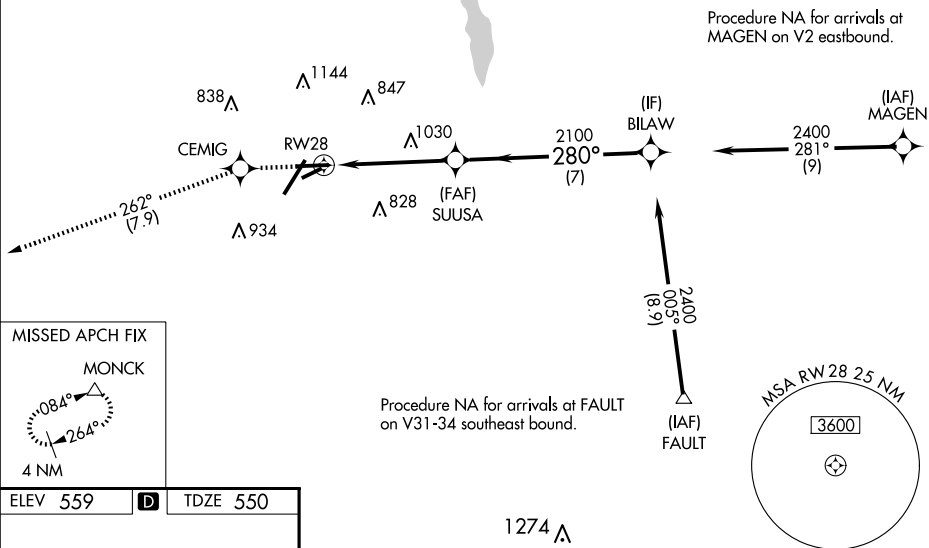
ATIS
124.825

ROCHESTER APP CON
119.55 269.6

ROCHESTER TOWER
118.3 254.3

GND CON
121.7

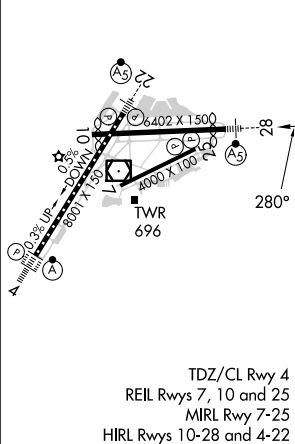
CLNC DEL
118.8 343.65



ELEV

□

TDZE 550



TDZ/CL Rwy 4
REIL Rwys 7, 10 and 25
MIRL Rwy 7-25
RL Rwys 10-28 and 4-22

Amdt 2A 05MAR15

43°07'N-77°40'W

RNAV (GPS) RWY 28