

LOC I-MCU 110.7	APP CRS 044°	Rwy ldg TDZE Apt Elev 8001 535 559
---------------------------	------------------------	--

ILS or LOC RWY 4
FREDERICK DOUGLASS/GREATER ROCHESTER INTL (ROC)

<div><div>▽</div><div>▲</div></div>	ALSF-2 <div><div>A</div><div><div></div><div></div><div></div><div></div><div></div></div></div>	MISSED APPROACH: Climb to 1100 then climbing right turn to 3000 on heading 135° and ROC VOR/DME R-096 to BREIT INT/ROC 5.3 DME and hold, continue climb-in-hold to 3000.
-------------------------------------	---	--

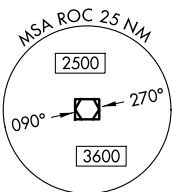
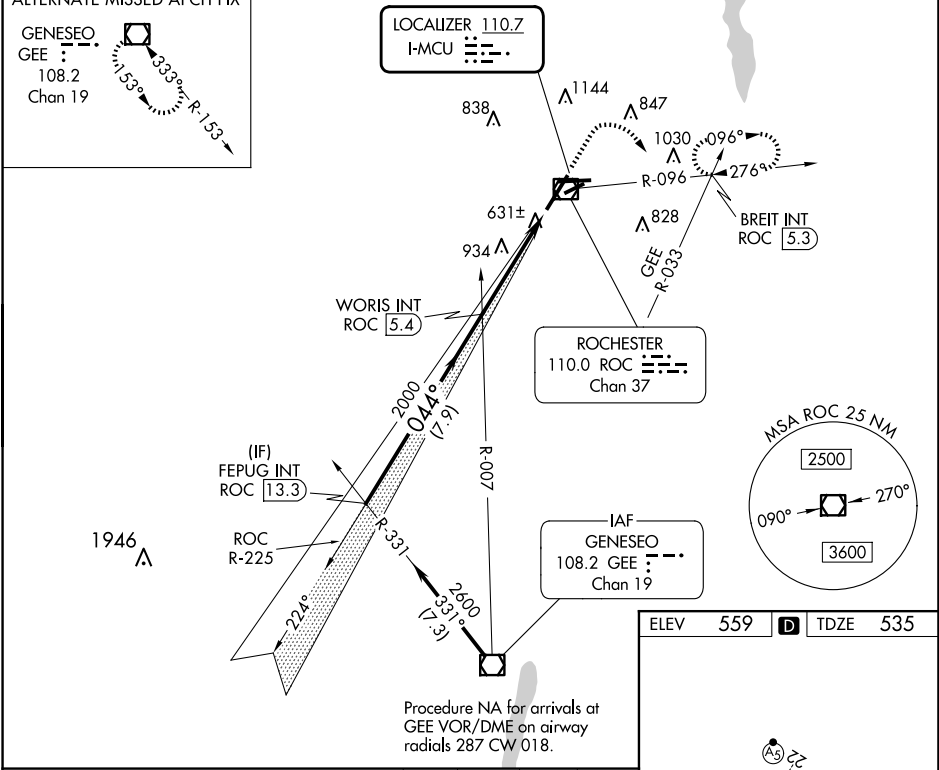
ATIS 124.825	ROCHESTER APP CON 119.55 269.6	ROCHESTER TOWER 118.3 254.3	GND CON 121.7	CLNC DEL 118.8 343.65
------------------------	--	---------------------------------------	-------------------------	---------------------------------

ALTERNATE MISSED APCH FIX

GENESECO
GEE
108.2
Chan 19

333°=R-153

115°



	FEPUG INT ROC 13.3	VGSI and ILS glidepath not coincident (VGSI Angle 3.00/ TCH 72).	1100	3000	ROC R-096	BREIT INT
	2600		↑	hdg 135°		
	044°		2000		ROC 0.9	
	GS 3.00° TCH 56		7.9 NM	4.5 NM		
CATEGORY	A	B	C	D		
S-ILS 4		735/18	200 (200-½)			
S-LOC 4	920/24	385 (400-½)	920/35	385 (400-⅝)		
CIRCLING	1060-1	501 (600-1)	1500-2¾ 941 (1000-2¾)	1500-3 941 (1000-3)		

