


ILS or LOC RWY 28  
FREDERICK DOUGLASS/GREATER ROCHESTER INTL (ROC)


**MALSR**



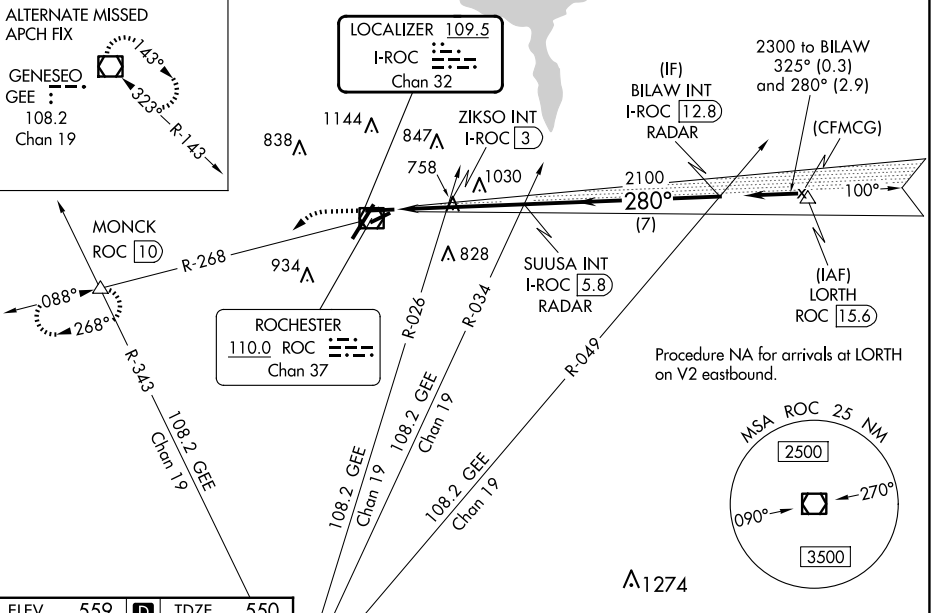
**MISSED APPROACH:** Climb to 2000 then climbing left turn to 3000 on heading 230° and ROC VOR/DME R-268 to MONCK INT/ROC 10 DME and hold.

ALTERNATE MISSED  
APCH FIX

GENESEO  
GEE :  
108.2  
Chan 19



143°  
323°-R-143°



2000 ↑	3000 hdg 230°	ROC R-268	MONCK △	SUUSA INT I-ROC [5.8]	BILAW INT I-ROC [12.8]
* LOC only		ZIKSO INT I-ROC [3]			
CATEGORY	A	B	C	D	
S-ILS 28	821/40		271 (300-¾)		
S-LOC 28	1200/40	650 (700-¾)	1200-1¾	650 (700-1¾)	
CIRCLING	1200-1	641 (700-1)	1500-2¾ 941 (1000-2¾)	1500-3 941 (1000-3)	
ZIKSO FIX MINIMUMS (DUAL VOR RECEIVERS OR DME REQUIRED)					
S-LOC 28	1020/40	470 (500-¾)	1020/50	470 (500-1)	
CIRCLING	1060-1	501 (600-1)	1500-2¾ 941 (1000-2¾)	1500-3 941 (1000-3)	

FREDERICK DOUGLASS/GREATER ROCHESTER INTL (ROC)  
43°07'N-77°40'W ILS or LOC RWY 28