

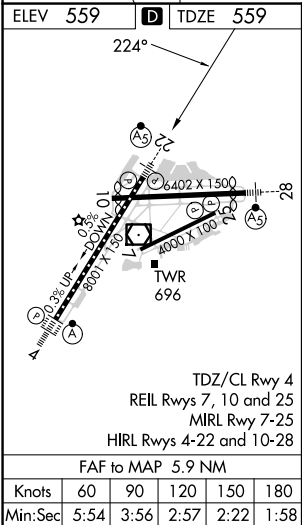
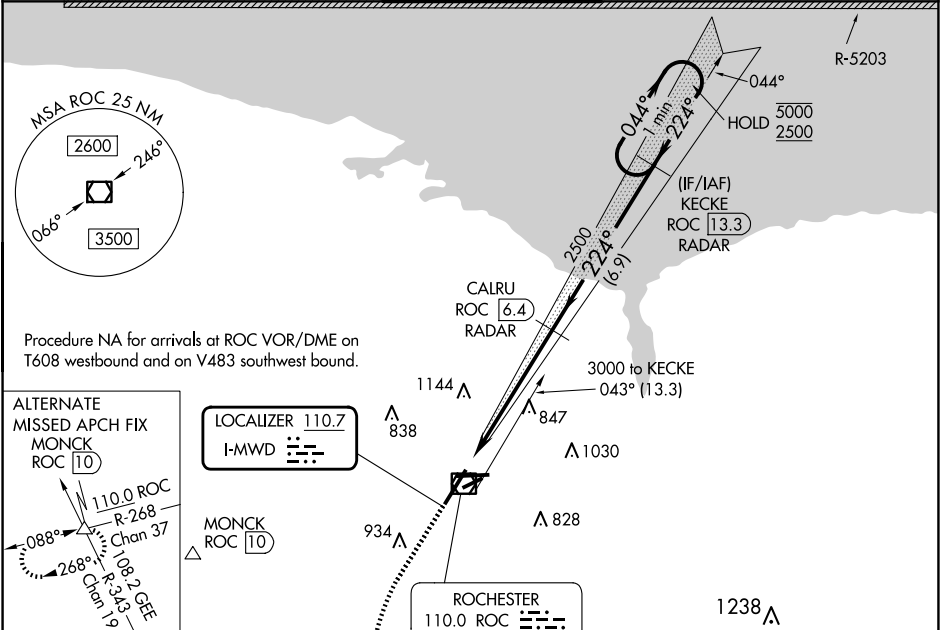
| | | | |
|-----------|---------|----------|------|
| LOC I-MWD | APP CRS | Rwy Idg | 8001 |
| 110.7 | 224° | TDZE | 559 |
| | | Apt Elev | 559 |

ILS or LOC RWY 22

FREDERICK DOUGLASS/GREATER ROCHESTER INTL (ROC)

| | | |
|--|-------|---|
| DME or RADAR required. | MALSR | MISSED APPROACH: Climb to 1000 then climbing left turn to 4000 direct GEE VOR/DME and hold. |
| When R-5203 active hold in lieu NA. DME from ROC VOR/DME. DME use requires simultaneous reception of I-MWD and ROC DME. * RVR 1800 authorized with use of FD or AP or HUD to DA. | | |

| | | | | |
|---------|-------------------|-----------------|---------|--------------|
| ATIS | ROCHESTER APP CON | ROCHESTER TOWER | GND CON | CLNC DEL |
| 124.825 | 119.55 269.6 | 118.3 254.3 | 121.7 | 118.8 343.65 |



| | | | | | | | | |
|--|--|---------------------------------------|---|---|--|--|--|---|
| <div>Chan 37</div> | | | | <div><div>GENESEO</div><div>GEE</div><div>108.2</div><div>Chan 19</div></div> <div><div><div><div></div><div>153°</div></div><div><div></div><div>333°-R-153°</div></div></div><div>MISSED APCH FIX</div></div> | | | | |
| <div>1000</div> <div><div></div></div> | <div>4000</div> <div><div></div></div> | <div>GEE</div> <div><div></div></div> | <div><div>CALRU</div><div>ROC <div>6.4</div></div></div> <div>RADAR</div> | | | | <div><div>KECKE</div><div>ROC <div>13.3</div></div></div> <div>RADAR</div> | <div>One Minute Holding Pattern</div> |
| <div><div><div></div><div>ROC <div>1.5</div></div></div><div><div></div><div>2500</div></div><div><div></div><div>2500</div></div><div><div></div><div>224°</div></div><div><div></div><div>044°</div></div><div><div></div><div>5000</div></div><div><div></div><div>2500</div></div><div><div></div><div>GS 3.00°</div></div><div><div></div><div>TCH 50</div></div><div><div></div><div>VGSI and ILS glidepath not coincident (VGSI Angle 3.00/TCH 67).</div></div></div> | | | | | | | | |
| <div><div></div><div>1.1 NM</div><div></div><div>4.8 NM</div><div></div><div>6.9 NM</div><div></div></div> | | | | | | | | |
| CATEGORY | A | B | C | D | | | | |
| S-ILS 22 * | 759/24 200 (200-½) | | | | | | | |
| S-LOC 22 | 980/24 | 421 (500-½) | 980/40 | 421 (500-¾) | | | | |
| CIRCLING | 1060-1 | 501 (600-1) | 1460-2¾ 901 (1000-2¾) | 1460-3 901 (1000-3) | | | | |