



ROCHESTER, NEW YORK

AL-351 (FAA)

24305

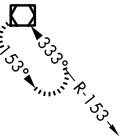
LOC I-MCU <u>110.7</u>	APP CRS 044°	Rwy Idg TDZE Apt Elev	8001 535 559
----------------------------------	------------------------	-----------------------------	---

ILS RWY 4 (CAT II)
FREDERICK DOUGLASS/GREATER ROCHESTER INTL (ROC)

		ALSF-2 		MISSED APPROACH: Climb to 1100 then climbing right turn to 3000 on heading 135° and ROC VOR/DME R-096 to BREIT INT/ROC 5.3 DME and hold, continue climb-in-hold to 3000.	
ATIS 124.825	ROCHESTER APP CON 119.55 269.6	ROCHESTER TOWER 118.3 254.3		GND CON 121.7	CLNC DEL 118.8 343.65

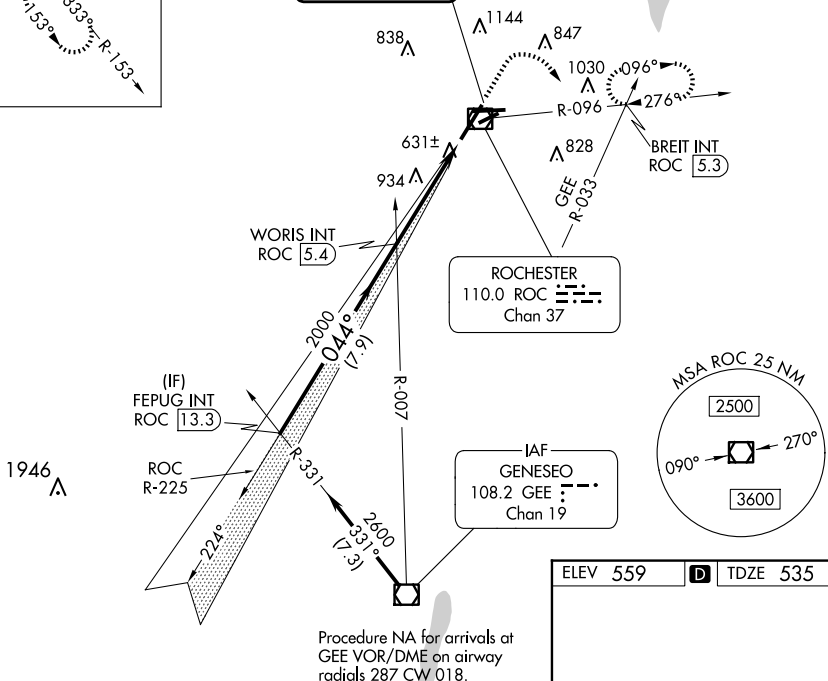
ALTERNATE MISSED APCH FIX

GENESEO.
GEE :
108.2
Chan 19



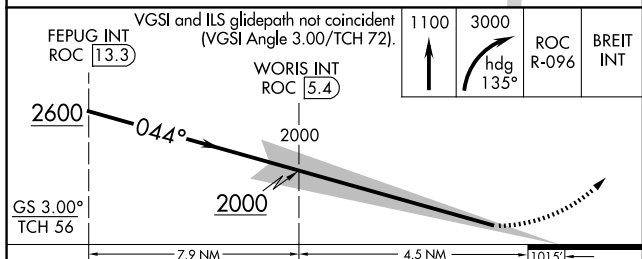
LOCALIZER 110.7
I-MCU 110.7

MISSED APPROACH: Climb to 1100 then climbing right turn to 3000 on heading 135° and ROC VOR/DME R-096 to BREIT INT/ROC 5.3 DME and hold, continue climb-in-hold to 3000.



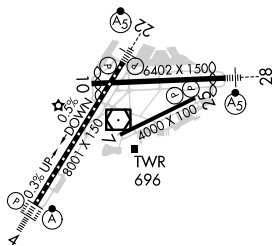
Procedure NA for arrivals at
GEE VOR/DME on airway
radials 287 CW 018.

ELEV 559	D	TDZE 535
----------	----------	----------



CATEGORY	A	B	C	D
S-ILS 4	RA 107/12 100 DA 635			

**CATEGORY II ILS - SPECIAL AIRCREW
& AIRCRAFT CERTIFICATION REQUIRED**



TDZ/CL Rwy 4
REIL Rwys 7, 10 and 25
MIRL Rwy 7-25
HIRL Rwys 10-28 and 4-22

ROCHESTER, NEW YORK
Amdt 21C 31OCT24

FREDERICK DOUGLASS/GREATER ROCHESTER INTL (ROC)
43°07'N-77°40'W ILS B/WV 4 (CAT II)

NE-2, 07 AUG 2025 to 04 SEP 2025