

APP CRS  
**058°**

Rwy Ldg  
TDZE  
**1175**

Apt Elev  
**1175**

RNAV (RNP) Z RWY 6

ROANOKE/BLACKSBURG RGNL (WOODRUM FLD) (R.O.A)

RNP AR APCH - GPS.

▼

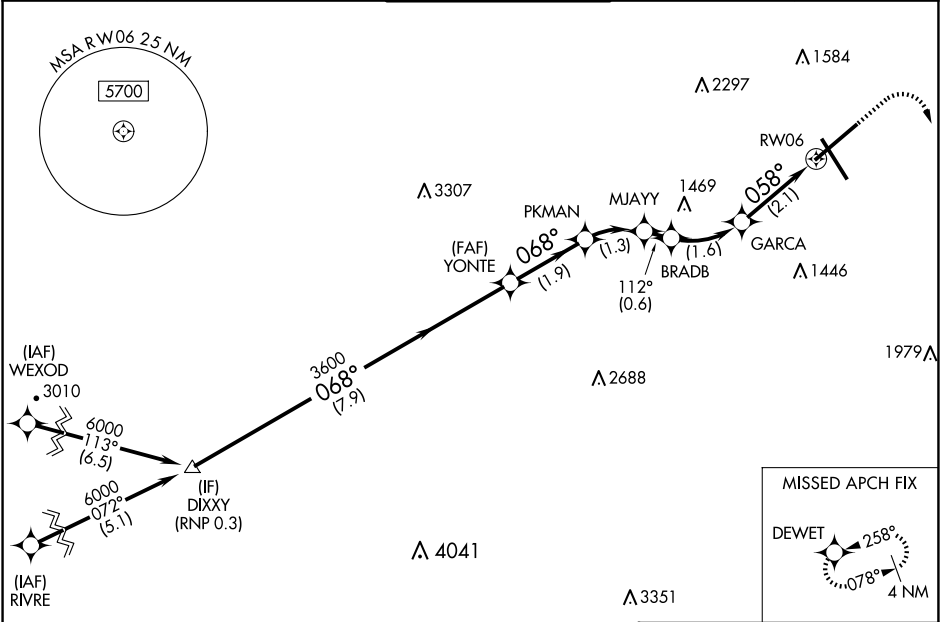
✱ -13°C

For uncompensated Baro-VNAV systems, procedure NA below -14°C or above 54°C. For inop ALS, increase RNP 0.20 all Cats visibility to ¾ SM.

MALSR

MISSED APPROACH: (Do not exceed 240K until DEWET) Climb to 1600 then climbing right turn to 5000 direct DEWET and hold, continue climb-in-hold to 5000. \*Missed approach requires minimum climb of 370 feet per NM to 2900.

ATIS <b>132,375</b>	ROANOKE APP CON <b>126.9 339.8</b>	ROANOKE TOWER <b>118.3 257.8</b>	GND CON <b>121.9 257.8</b>	CLNC DEL <b>119.7</b>
------------------------	---------------------------------------	-------------------------------------	-------------------------------	--------------------------



ELEV 1175

**D**

TDZE 1175

GP 3.00° TCH 58

6000

068°

3600

7.9 NM

1.9 NM

1.3 NM

0.6 NM

1.6 NM

2.1 NM

1600

5000

DEWET

112°

058°

91

6800 X 150

3810 X 150

0.4% UP

TWR

AS

AS

AS

CATEGORY	A	B	C	D
RNP 0.20 DA*		1444-½	269 (300-½)	
RNP 0.30 DA		1605-¾	430 (500-¾)	

AUTHORIZATION REQUIRED

REIL Rwy 6 and 24  
HIRL Rwy 6-24 and 16-34