

APP CRS
336°

Rwy Ldg
TDZE
1160

Apt Elev
1175

RNAV (RNP) Z RWY 34

ROANOKE/BLACKSBURG RGNL (WOODRUM FLD) (R.O.A)

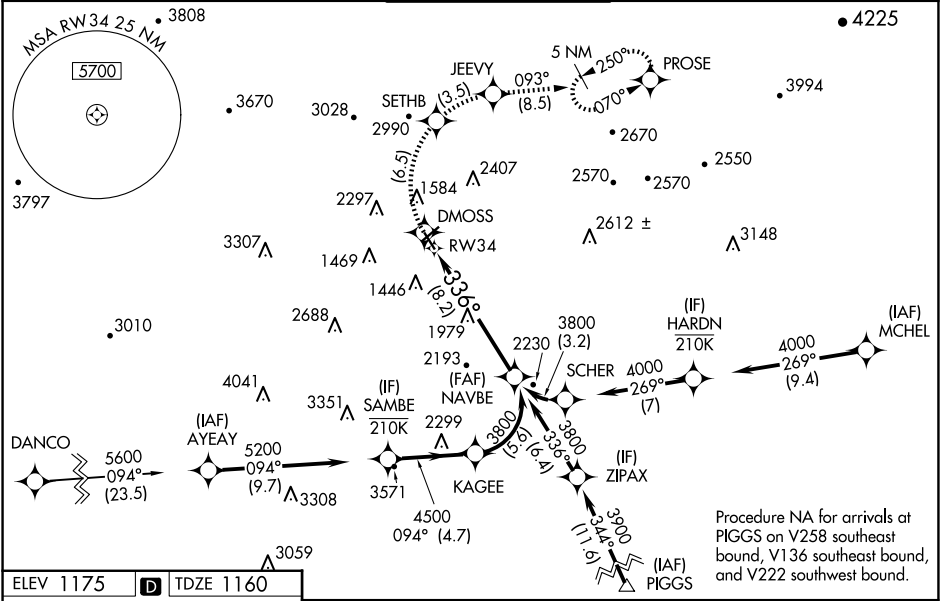
RNP AR APCH. RF required.

Missed approach requires RNP less than 1.0. For inop ALS, increase RNP 0.30 * all Cats visibility to 1½ SM. Inop table does not apply to RNP 0.30. For uncompensated Baro-VNAV systems, procedure NA below -14°C or above 54°C.

MALSR

MISSED APPROACH: Climb to 6000 on track 336° to DMOSS, right turn to SETHB, right turn to JEEVY and on track 093° to PROSE and hold. * Missed approach requires minimum climb of 350 feet per NM to 4100. # Missed approach requires minimum climb of 415 feet per NM to 4100.

ATIS 132.375	ROANOKE APP CON 126.9 339.8	ROANOKE TOWER 118.3 257.8	GND CON 121.9 257.8	CLNC DEL 119.7
------------------------	---------------------------------------	-------------------------------------	-------------------------------	--------------------------



ELEV 1175

D

TDZE 1160

6000

DMOSS

SETHB

JEEVY

PROSE

See planview for multiple IF locations.

NAVBE

3800

GP 3.00°

TCH 56

CATEGORY	A	B	C	D
RNP 0.15 DA #	1495-½	335 (400-½)		
RNP 0.30 DA*	1646-1	486 (500-1)		
RNP 0.30 DA	2115-4	955 (1000-4)		

AUTHORIZATION REQUIRED