

LOC I-ROA  
**109.7**

APP CRS  
**336°**

Rwy ldg **5810**  
TDZE **1160**  
Apt Elev **1175**

ILS or LOC RWY 34

ROANOKE/BLACKSBURG RGNL (WOODRUM FLD) (R.O.A)

DME required for procedure entry. ADF or RADAR required.

▼

▲

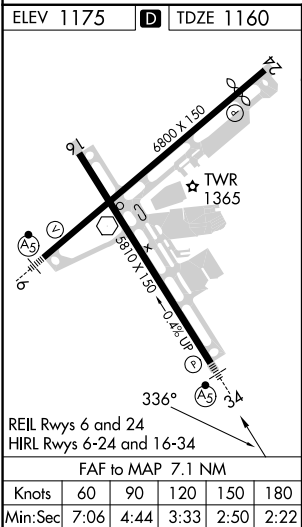
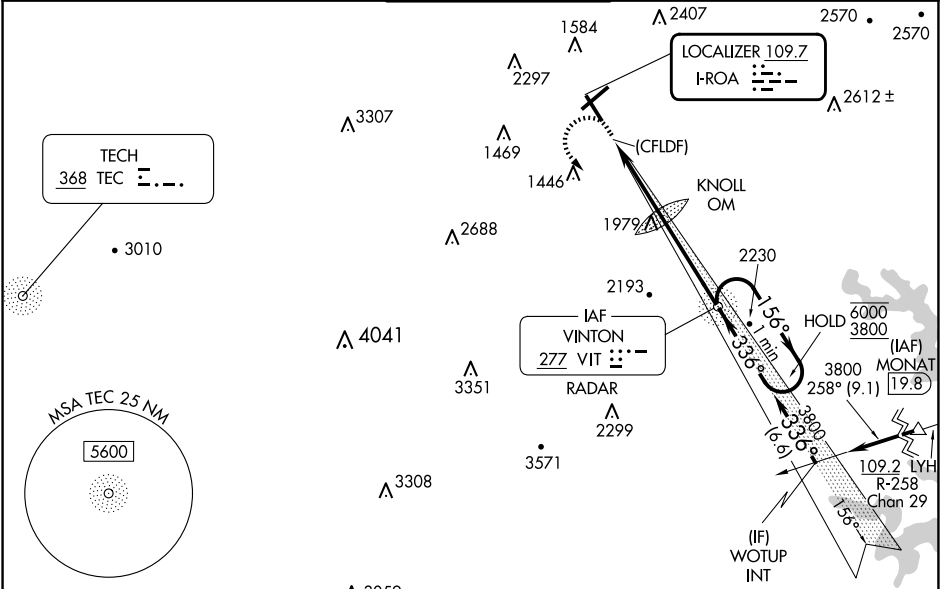
☁

For inop ALS, increase S-ILS 34 # all Cats visibility to 1½ SM. Circling NA northwest of Rwy 6-24.  
Inop table does not apply to S-ILS 34 all Cats.

MALSR

MISSED APPROACH: Climb to 2300 then climbing left turn to 4500 direct VIT NDB and hold. Continue climb-in-hold to 4500. # Missed approach requires minimum climb of 425 feet perNM to 3700.

ATIS <b>132.375</b>	ROANOKE APP CON <b>126.9 339.8</b>	ROANOKE TOWER <b>118.3 257.8</b>	GND CON <b>121.9 257.8</b>	CLNC DEL <b>119.7</b>
------------------------	---------------------------------------	-------------------------------------	-------------------------------	--------------------------



Procedure NA for arrivals at MONAT on V470 northeast bound.

2300

4500

VIT

One Minute Holding Pattern

KNOLL OM

VIT NDB RADAR

3780

156°

6000

3800

336°

2500

2511

0.9

3.3 NM

3.8 NM

GS 3.00°

TCH 56

CATEGORY	A	B	C	D
S-ILS 34 #	1603-7/8		443 (500-7%)	
S-ILS 34	2040-4		880 (900-4)	
S-LOC 34	2140-3/4 980 (1000-3/4)	2140-1 980 (1000-1)	2140-2 1/2 980 (1000-2 1/2)	
CIRCLING	2140-1 1/4 965 (1000-1 1/4)	2140-1 1/2 965 (1000-1 1/2)	2460-3 1285 (1300-3)	2800-3 1625 (1700-3)