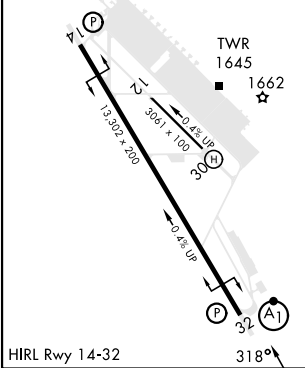
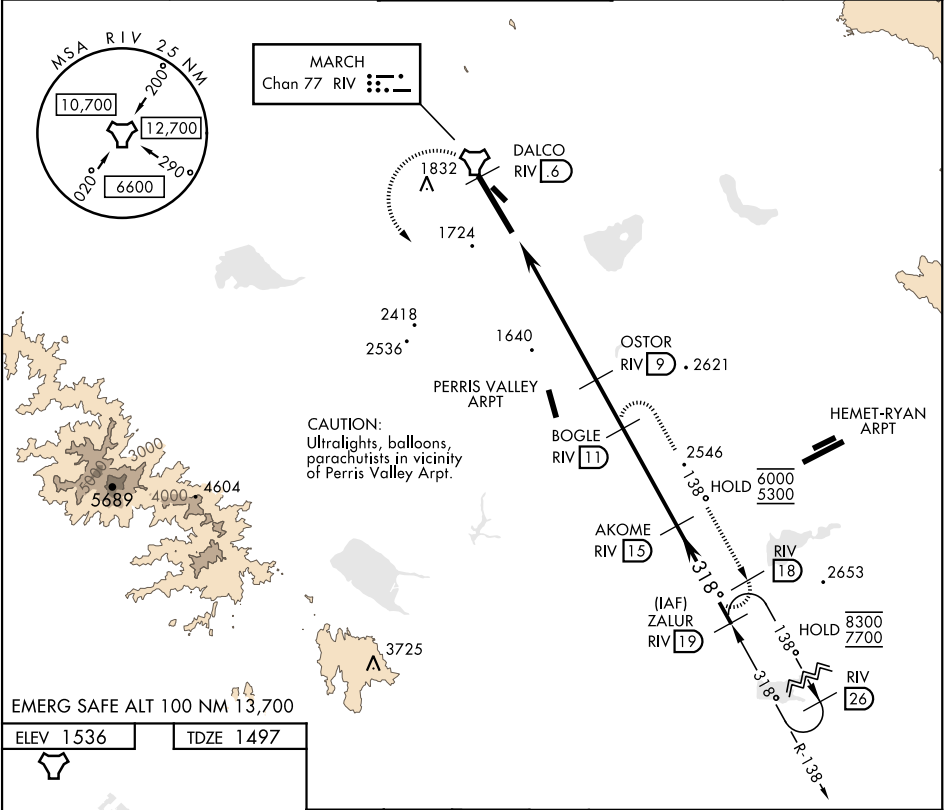


TACAN Y RWY 32

TACAN RIV Chan 77	APCH CRS 318°	Rwy Ldg 13,302 TDZE 1497 Arpt Elev 1536	AL-348 [USAF]	MARCH ARB (KRIV)
*When ALS inop, increase CAT AB RVR to 55 and vis to 1 mile, CAT CDE vis to 1½ miles. **Circling not authorized NE of Rwy 14-32. Rapid rising terrain.			ALSF-1 	MISSED APPROACH: Climb to 5300 on RIV TACAN R-138 to DALCO, then turn left to intercept RIV R-138 direct BOGLE, continue climb in hold to 5300.
ATIS 134.75 239.05	APP/DEP CON ★ 133.5 306.975	TOWER 127.65 253.5	GND CON 121.75 335.8	CLNC DEL 127.775 268.7



5300 ↑ RIV R-138	DALCO RIV 6	RIV R-138	BOGLE RIV 11			
TACAN		CULAX 3.3	OSTOR 9	AKOME 15	ZALUR 19	
0.5		5.7 NM				
CATEGORY		A	B	C	D	E
S-32 *		2040/24 543 (600-½)		2040/60 543 (600-1½)		
CIRCLING**		2180-1 644 (700-1)	2260-1 724 (800-1)	2300-2¼ 764 (800-2¼)	2440-3 904 (1000-3)	2840-3 1304(1400-3)

TACAN Y RWY 32

SW-3, 07 AUG 2025 to 04 SEP 2025

SW-3, 07 AUG 2025 to 04 SEP 2025