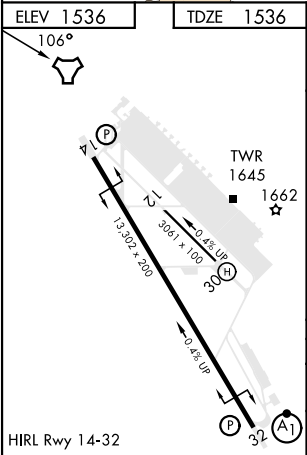
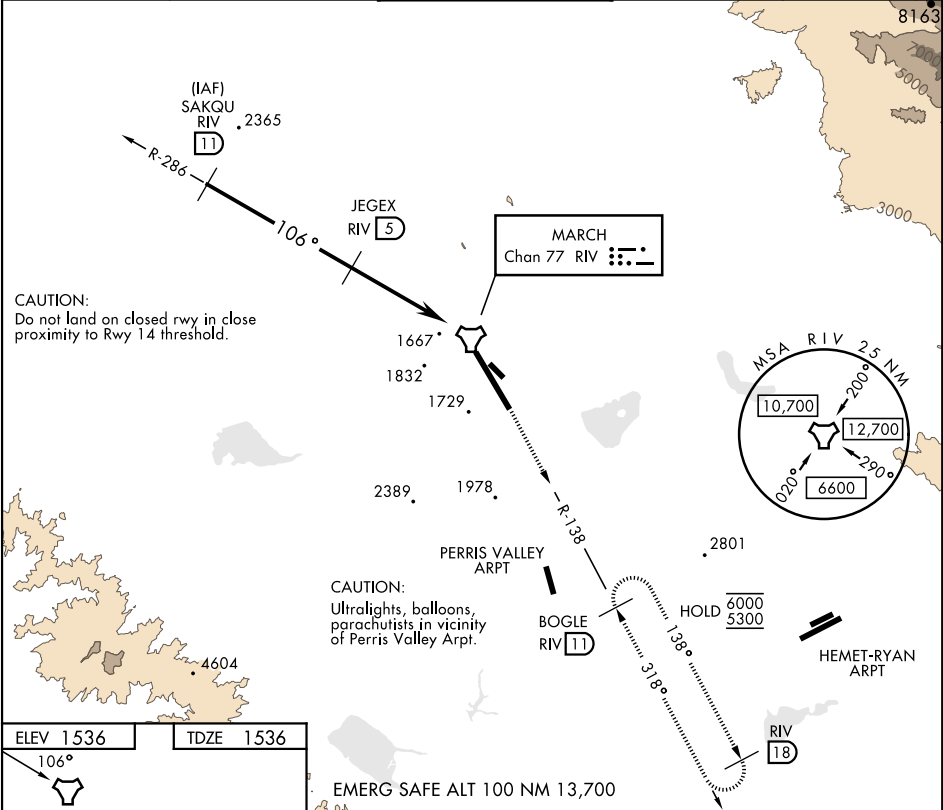


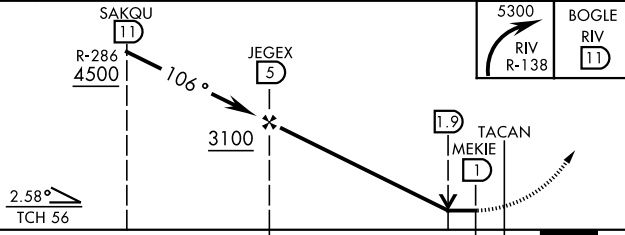

TACAN Y RWY 14

TACAN RIV Chan 77	APCH CRS 106°	Rwy Idg 13,302 TDZE 1536 Arpt Elev 1536	AL-348 [USAF]	MARCH ARB (KRIV)
----------------------	------------------	---	---------------	------------------

<div><div></div><div>* Circling not authorized NE of Rwy 14-32. Rapid rising terrain.</div></div>	MISSED APPROACH: Climb out RIV TACAN R-138 direct BOGLE, continue to climb in hold to 5300.
---	--

ATIS 134.75 239.05	APP/DEP CON★ 133.5 306.975	TOWER 127.65 253.5	GND CON 121.75 335.8	CLNC DEL 127.775 268.7
-----------------------	-------------------------------	-----------------------	-------------------------	---------------------------



 <p>SAKQU (11) R-286 4500 106° JEGEX (5) 3100 4.0 NM TACAN (1) 1.9° MEKIE 1536 0.5 RIV R-138 BOGLE RIV (11)</p>				5300 RIV R-138		BOGLE RIV (11)	
CATEGORY		A	B	C	D	E	
S-14	2260-17 ⁷ / ₈ 724 (800-17 ⁷ / ₈)		2260-2 724 (800-2)				
 CIRCLING*	2260-17 ⁷ / ₈ 724 (800-17 ⁷ / ₈)	2260-17 ⁷ / ₈ 724 (800-17 ⁷ / ₈)	2300-2 764 (800-2 1/4)	2440-3 904 (1000-3)	2840-3 1304 (1400-3)		

TACAN Y RWY 14

SW-3, 07 AUG 2025 to 04 SEP 2025

SW-3, 07 AUG 2025 to 04 SEP 2025