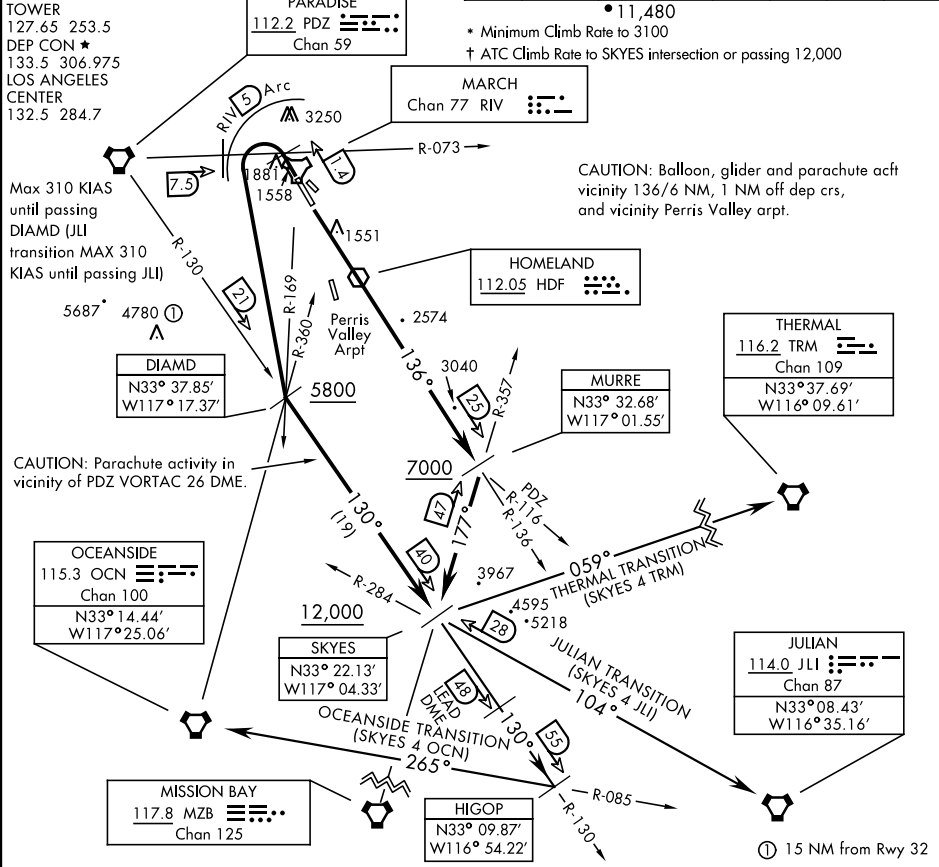


ATIS 134.75 239.05	RADAR required TRM transition	Rwy	Knots	60	120	180	240	300	360
CLNC DEL 127.775 268.7		* 32	V/V(fpm)	231	462	693	924	1155	1386
GND CON 121.75 335.8		† 14	V/V(fpm)	334	668	1002	1336	1670	2004
TOWER 127.65 253.5		† 32	V/V(fpm)	309	618	927	1236	1545	1854
DEP CON ★ 133.5 306.975									
LOS ANGELES CENTER 132.5 284.7									



DEPARTURE ROUTE DESCRIPTION

TAKEOFF RWY 14: Climb via RIV TACAN R-136 or climb direct HDF VOR, then via HDF R-136 to MURRE, intercept MZB VORTAC R-357 to SKYES, cross MURRE at or above 7000, and SKYES at or above 12,000. Thence via transition or assigned route.

TAKEOFF RWY 32: Climb on track 315°, then turn left crossing PDZ VORTAC R-073/RIV TACAN 1.4 DME direct DIAMD, proceed no closer than 7.5 DME PDZ. Remain within 5 DME RIV. Cross DIAMD at or above 5800. Intercept PDZ R-130 to SKYES, cross SKYES at or above 12,000. Thence via transition or assigned route.

JULIAN TRANSITION (SKYES 4 JLI): From over SKYES via JLI VORTAC R-284 direct JLI. MAX 310 KIAS until passing JULIAN VORTAC.

OCEANSIDE TRANSITION (SKYES 4 OCN): From over SKYES via PDZ VORTAC R-130 direct HIGOP, intercept OCN VORTAC R-085 direct OCN.

THERMAL TRANSITION (SKYES 4 TRM): From over SKYES track 059° to TRM. (Radar required)