

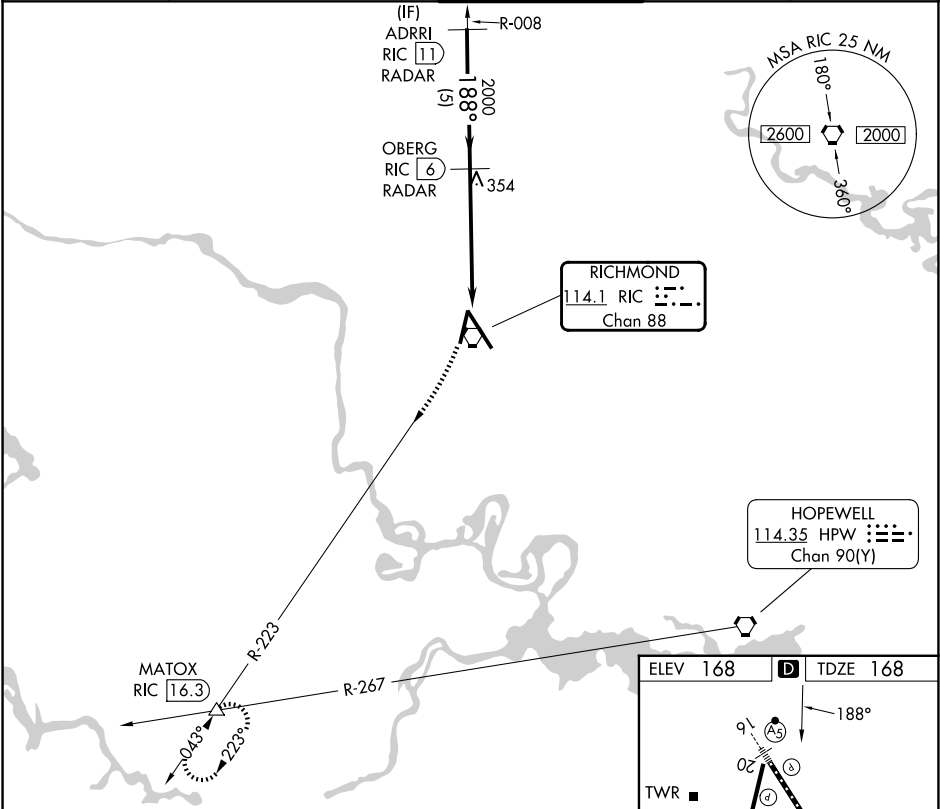
VORTAC RIC	APP CRS	Rwy Ldg	6607
114.1	188°	TDZE	168
Chan 88		Apt Elev	168

VOR RWY 20  
RICHMOND INTL (RIC)

RADAR required for procedure entry. DME or RADAR required.

MISSED APPROACH: Climbing right turn to 2000 on RIC R-223 to MATOX INT/RIC 16.3 DME and hold.

ATIS	POTOMAC APP CON	RICHMOND TOWER	GND CON	CLNC DEL
119.15 263.025	126.4 282.375 (001°-185°) 126.75 307.2 (186°-360°)	121.1 257.8	121.9 348.6	127.55 348.6



2000	MATOX	VGSI and descent angles not coincident (VGSI Angle 3.00/TCH 49).			
RIC R-223	△				
RIC 0.9	RIC 2.2	OBERG RIC 6 RADAR	ADRRI RIC 11 RADAR	2000	
RIC VORTAC					
1.4	3.8 NM	5 NM			
CATEGORY	A	B	C	D	
S-20	660-1	492 (500-1)	660-1 3/8	492 (500-1 3/8)	
CIRCLING	660-1	492 (500-1)	700-1 1/2 532 (600-1 1/2)	720-2 552 (600-2)	

