
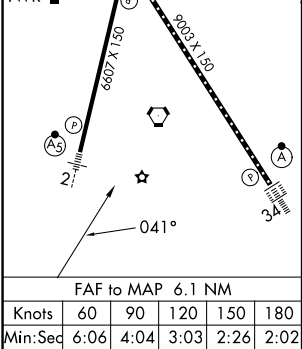
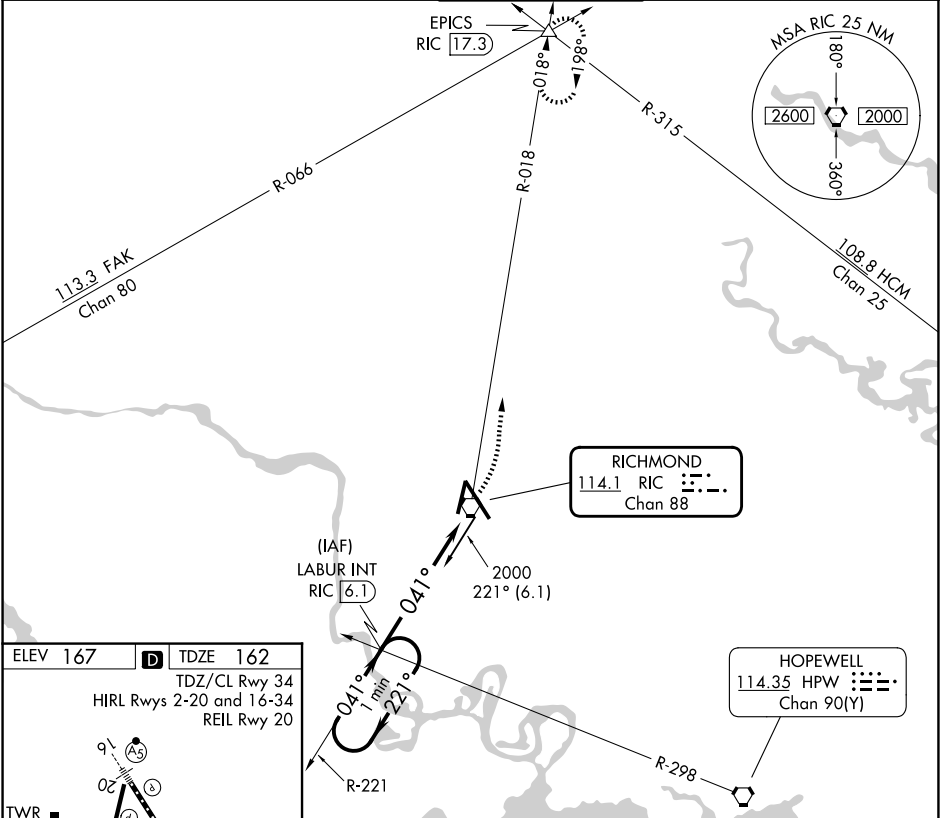


VORTAC RIC	APP CRS	Rwy Ldg	6607
114.1	041°	TDZE	162
Chan 88		Apt Elev	167

VOR RWY 2
RICHMOND INTL (RIC)

<p>▼ Rwy 2 helicopter visibility reduction below $\frac{3}{4}$ SM NA. For inop ALS, increase S-2 Cat A/B visibility to 1 SM, and Cat C/D to 1$\frac{1}{2}$ SM.</p>	<p>MALSRL</p> <p></p>	<p>MISSED APPROACH: Climbing left turn to 2000 on RIC VORTAC R-018 to EPICS INT/RIC 17.3 DME and hold.</p>
---	--	--

ATIS	POTOMAC APP CON	RICHMOND TOWER	GND CON	CLNC DEL
119.15 263.025	126.4 282.375 (001°-185°) 126.75 307.2 (186°-360°)	121.1 257.8	121.9 348.6	127.55 348.6



One Minute Holding Pattern		LABUR INT RIC 6.1	2000 RIC R-018	EPICS
2000 ← 221° 041° →		041°	RIC 1.7	RIC VORTAC
		2.98° TCH 49	4.3 NM	1.4
CATEGORY	A	B	C	D
S-2	640- $\frac{3}{4}$	478 (500- $\frac{3}{4}$)	640-1	478 (500-1)
CIRCLING	660-1	493 (500-1)	700-1 $\frac{1}{2}$ 533 (600-1 $\frac{1}{2}$)	720-2 553 (600-2)