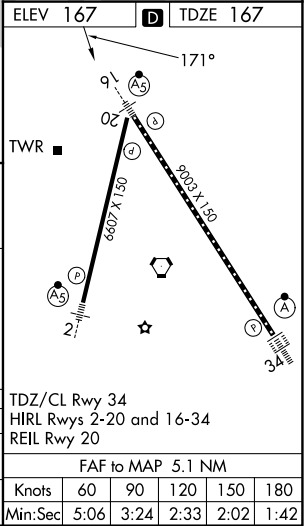
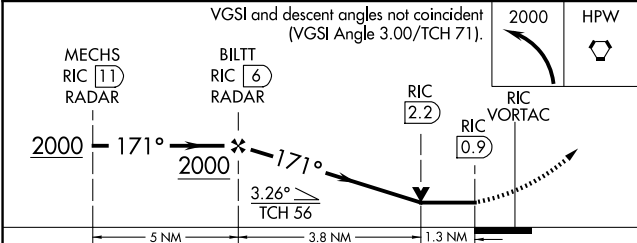
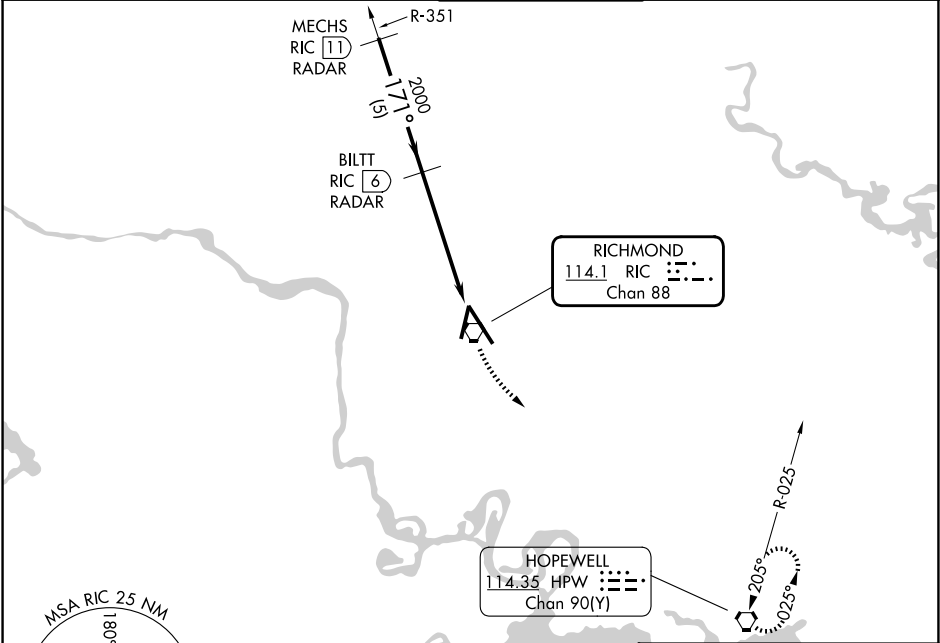


VORTAC RIC	APP CRS	Rwy Ldg	9003
114.1	171°	TDZE	167
Chan 88		Apt Elev	167

VOR RWY 16
RICHMOND INTL (RIC)

DME or RADAR required. RADAR required for procedure entry.	MALSR	MISSED APPROACH: Climbing left turn to 2000 direct HPW VORTAC and hold.
Rwy 16 helicopter visibility reduction below RVR 4000 NA. For inop ALS, increase S-16 Cat A/B visibility to RVR 5500, and Cat C/D to 1 3/8 SM.	A5	

ATIS	POTOMAC APP CON	RICHMOND TOWER	GND CON	CLNC DEL
119.15 263.025	126.4 282.375 (001°-185°)	121.1 257.8	121.9 348.6	127.55 348.6
	126.75 307.2 (186°-360°)			



CATEGORY	A	B	C	D
S-16	640/40 473 (500-3/4)			640/50 473 (500-1)
CIRCLING	660-1 493 (500-1)	700-1 533 (600-1 1/2)	720-2 553 (600-2)	

TDZ/CL Rwy 34	60	90	120	150	180
HIRL Rwy 2-20 and 16-34	5:06	3:24	2:33	2:02	1:42
REIL Rwy 20					
FAF to MAP 5.1 NM					