

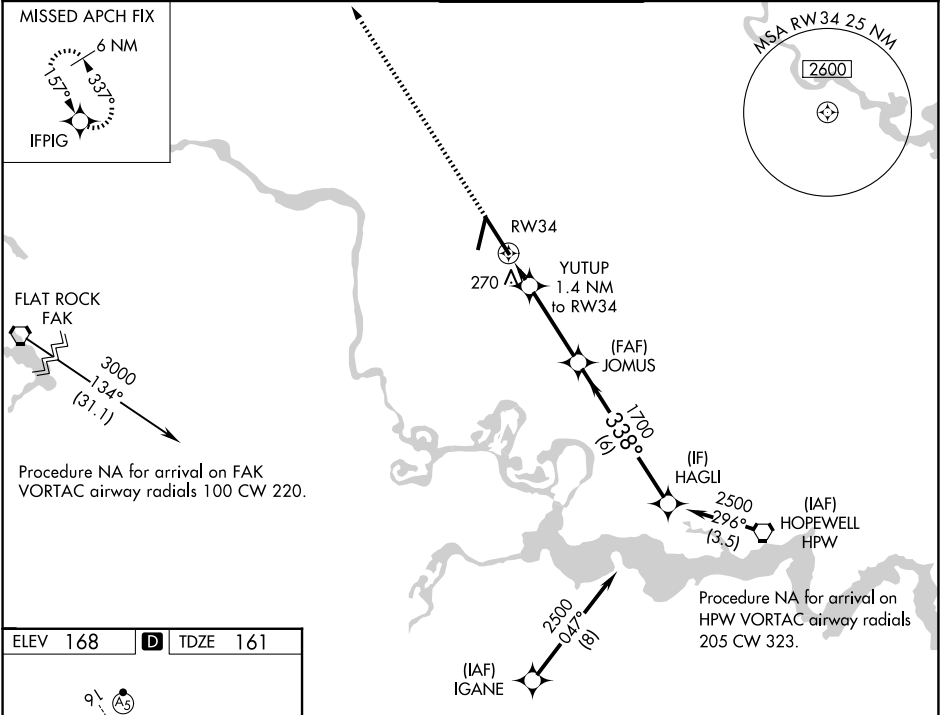
WAAS CH <b>97520</b> <b>W34A</b>	APP CRS <b>338°</b>	Rwy Ldg <b>9003</b> TDZE <b>161</b> Apt Elev <b>168</b>
--	------------------------	---

RNAV (GPS) Z RWY 34

RICHMOND INTL (RIC)

RNP APCH. ▼ For uncompensated Baro-VNAV systems, LNAV/VNAV NA below -11°C or above 54°C. For inop ALS, increase LNAV/VNAV all Cats visibility to 1¼ SM and LNAV Cats C and D visibility to RVR 5500.	ALSF-2 A MISSED APPROACH: Climb to 2500 direct IFPIG and hold.
---	--

ATIS <b>119.15 263.025</b>	POTOMAC APP CON <b>126.4 282.375</b> (001°-185°) <b>126.75 307.2</b> (186°-360°)	RICHMOND TOWER <b>121.1 257.8</b>	GND CON <b>121.9 348.6</b>	CLNC DEL <b>127.55 348.6</b>
-------------------------------	--	--------------------------------------	-------------------------------	---------------------------------



CATEGORY		A	B	C	D
LPV	DA	361/18		200 (200-½)	
LNAV/VNAV	DA	530/37		369 (400-¾)	
LNAV	MDA	520/24	359 (400-½)	520/30	359 (400-¾)
CIRCLING		660-1	492 (500-1)	700-1½ 532 (600-1½)	720-2 552 (600-2)