

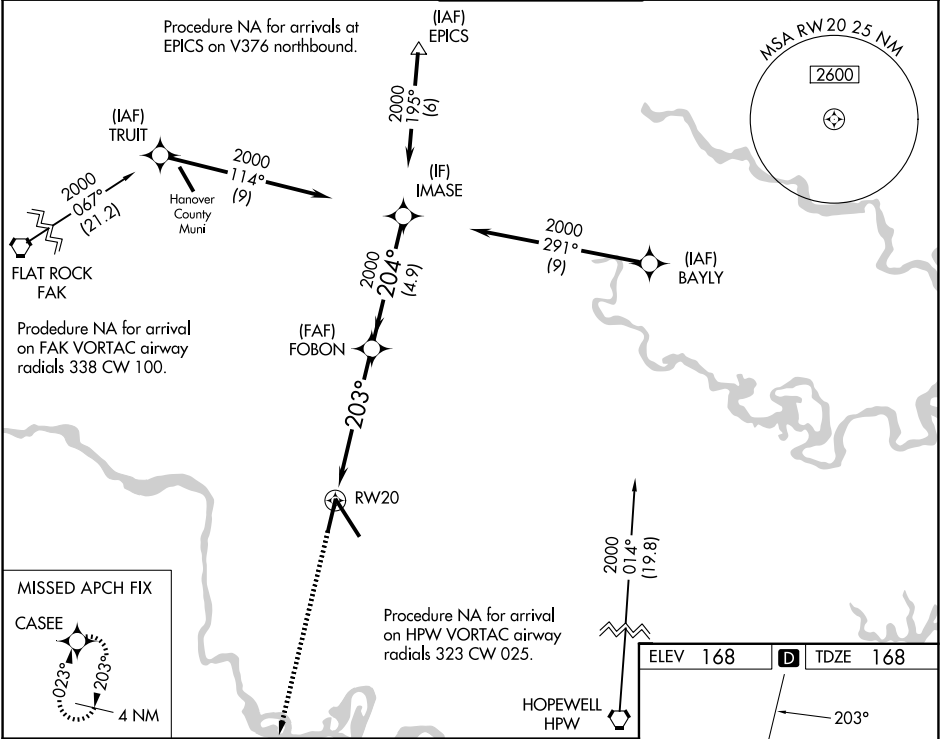
WAAS CH <b>69320</b> <b>W20A</b>	APP CRS <b>203°</b>	Rwy Ldg TDZE <b>168</b> Apt Elev <b>168</b>
--	------------------------	---

RNAV (GPS) Z RWY 20

RICHMOND INTL (RIC)

RNP APCH. ▼ For uncompensated Baro-VNAV systems, LNAV/VNAV NA below -11°C (13°F) or above 54°C (130°F). Rwy 20 helicopter visibility reduction below ¾ SM NA.	MISSED APPROACH: Climb to 2000 direct CASEE and hold.
--	--

ATIS <b>119.15 263.025</b>	POTOMAC APP CON <b>126.4 282.375</b> (001°-185°) <b>126.75 307.2</b> (186°-360°)	RICHMOND TOWER <b>121.1 257.8</b>	GND CON <b>121.9 348.6</b>	CLNC DEL <b>127.55 348.6</b>
-------------------------------	--	--------------------------------------	-------------------------------	---------------------------------



2000	CASEE	*LNAV only.	FOBON	IMASE
↑	✱	*1.5 NM to RW20	2000	2000
RW20				
1.5 NM 4.1 NM 4.9 NM				
CATEGORY	A	B	C	D
LPV DA	464-7/8		296 (300-7/8)	
LNAV/VNAV DA	603-1 1/2		435 (500-1 1/2)	
LNAV MDA	680-1	512 (600-1)	680-1 3/8	512 (600-1 3/8)
CIRCLING	680-1	512 (600-1)	700-1 1/2 532 (600-1 1/2)	720-2 552 (600-2)

