

RICHMOND, VIRGINIA

AL-347 (FAA)

25219

APP CRS	Rwy Ldg	9003
157°	TDZE	167
	Apt Elev	168

RNAV (RNP) Y RWY 16

RICHMOND INTL (RIC)

RNP AR APCH.

T For uncompensated Baro-VNAV systems, procedure NA below -11°C (13°F) or above 54°C (130°F). For inop ALS, increase RNP 0.11 all Cats visibility to RVR 5500 and RNP 0.30 all Cats visibility to 1½ SM.

MALSR

MISSED APPROACH:
Climb to 2500 on track
157° to HAGL and hold.

ATIS
119.15 263.025

POTOMAC APP CON

126.4	282.375	(001°-185°)
126.75	307.2	(186°-360°)

RICHMOND TOWER
121.1 257.8

GND CON
121.9 348.6

CLNC DEL
127.55 348.6

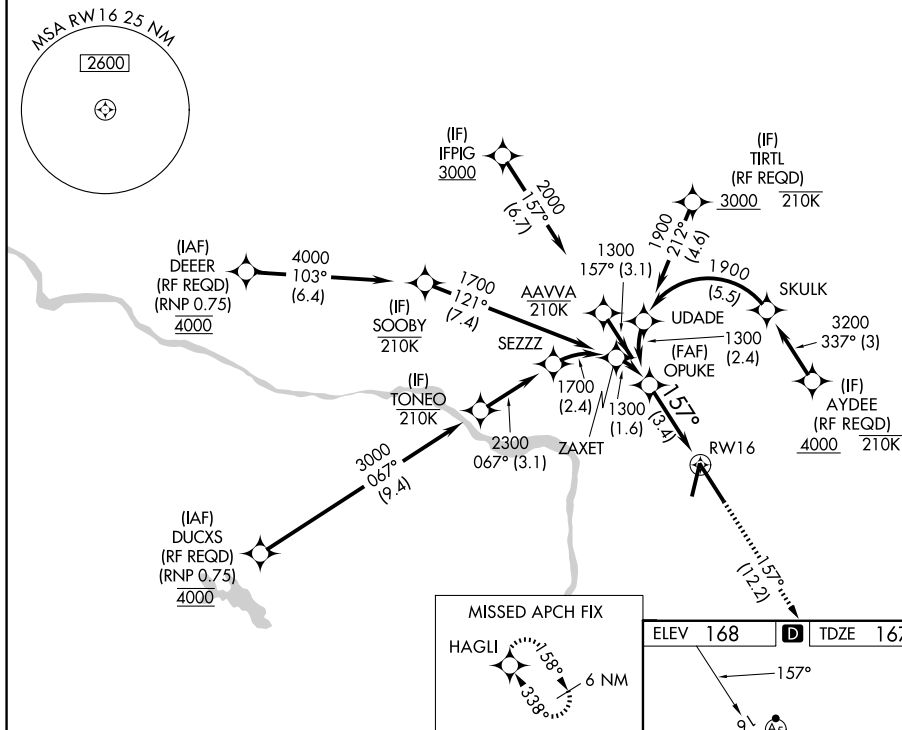


Diagram illustrating the OPUKE VORTIS and RW16 VORTIS navigation aids. The diagram shows a 3.4 NM distance between the two aids. OPUKE is at 1300 MSL, and RW16 is at 2500 MSL. The glidepath angle is 1.57 degrees. The diagram also shows the GP 3.00° TCH 54 and the HAGLI VORTIS.

CATEGORY	A	B	C	D
RNP 0.11 DA	506/40 339 (400-¾)			
RNP 0.30 DA	606/50 439 (500-1)			

AUTHORIZATION REQUIRED

ELEV 168	D	TDZE 167
----------	----------	----------

TDZ/CL Rwy 34
HIRL Rwy 2-20 and 16-34
REIL Rwy 20

RICHMOND, VIRGINIA

Orig-C 19JUL18

37°30'N-77°19'W

RICHMOND INTL (RIC)

RNAV (RNP) Y RWY 16

NE-3, 07 AUG 2025 to 04 SEP 2025