

LOC I-BNE <u>110.7</u>	APP CRS 337°	Rwy Ldg TDZE Apt Elev	9003 161 168
----------------------------------	------------------------	-----------------------------	---

ILS or LOC RWY 34
RICHMOND INTL (RIC)

DME required for LOC only.

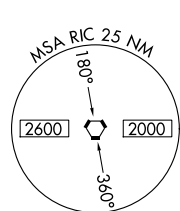
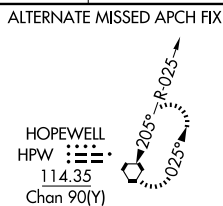
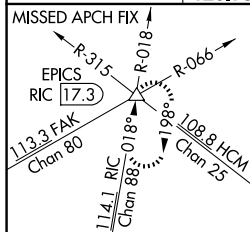
T For inop ALS, increase S-ILS 34 Cat E visibility to RVR 4000 and S-LOC 34 Cat E visibility to 1 $\frac{3}{8}$ SM. DME from RIC VORTAC. DME use requires simultaneous reception of I-BNE and RIC DME.

ALSF-2



MISSED APPROACH: Climb to 800 then climbing right turn to 2000 on RIC VORTAC R-018 to EPICS INT/RIC 17.3 DME and hold.

ATIS		POTOMAC APP CON		RICHMOND TOWER		GND CON		CLNC DEL	
119.15	263.025	126.4	282.375 (001°-185°)	121.1	257.8	121.9	348.6	127.55	348.6
		126.75	307.2 (186°-360°)						



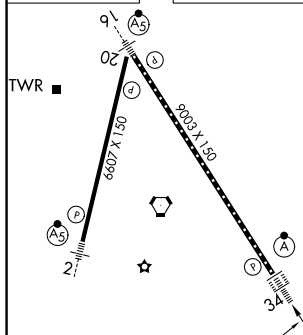
LOCALIZER 110.7
I-BNE $\equiv :: \cdot \cdot$

RICHMOND
114.1 RIC 
Chan 88

JOMUS
BIG 54

HOPEWELL
114.35 HPW
Chan 90(Y)

ELEV 168	D	TDZE 161
----------	----------	----------



TDZ/CL Rwy 34
HIRL Rwy 2-20 and 16-34
REIL Rwy 20

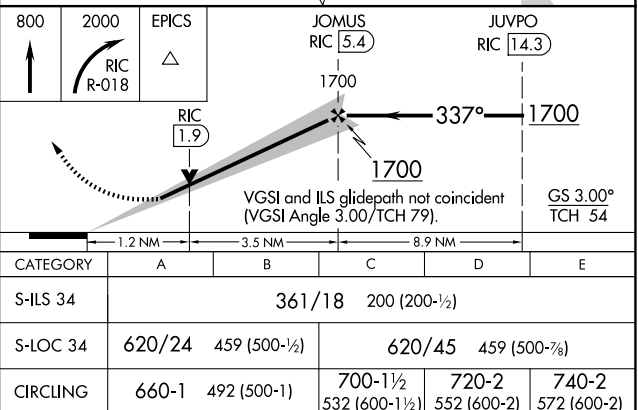
FAF to MAP 4.7 NM

Knots	60	90	120	150	180
Min:Sec	4:42	3:08	2:21	1:53	1:34

RICHMOND, VIRGINIA

Amdt 15A 15JUN23

37°30'N-77°19'W



RICHMOND INTL (RIC)

ILS or LOC RWY 34