

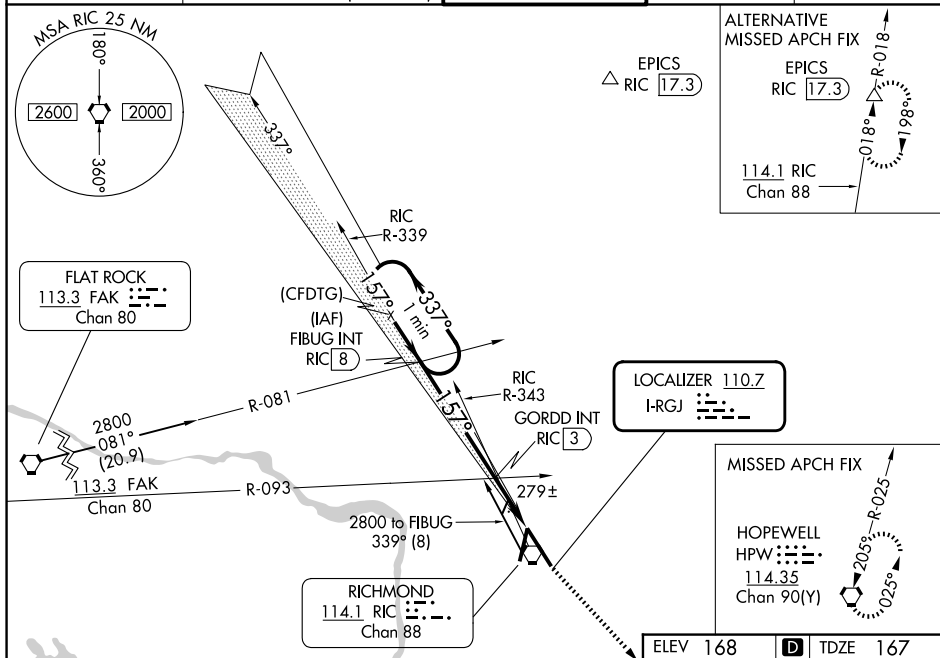


LOC I-RGJ <b><u>110.7</u></b>	APP CRS <b>157°</b>	Rwy Ldg <b>9003</b> TDZE <b>167</b> Apt Elev <b>168</b>
----------------------------------	------------------------	---

ILS or LOC RWY 16  
RICHMOND INTL (RIC)

	<p>For inop ALS, increase S-LOC 16 Cats C and D visibility to 2 SM. GORDD Fix Minimums: for inop ALS, increase S-LOC 16 Cats C and D visibility to 1½ SM. **RVR 1800 authorized with use of FD or AP or HUD to DA. % DME from RIC VORTAC.</p>		<p>MISSED APPROACH: Climb to 2000 direct HPW VORTAC and hold.</p>
---	---	---	---

ATIS		POTOMAC APP CON		RICHMOND TOWER		GND CON		CLNC DEL	
119.15	263.025	126.4	282.375 (001°-185°)	121.1	257.8	121.9	348.6	127.55	348.6
		126.75	307.2 (186°-360°)						



One Minute Holding Pattern

FIBUG INT RIC 8

2500

2800 ← 337° 157° →

GS 3.00° TCH 54

VGSI and ILS glidepath not coincident (VGSI Angle 3.00/TCH 71).

2500

GORDD INT RIC 3

\*920

\*LOC only.

RIC 0.9

5 NM

2.1 NM

CATEGORY	A	B	C	D
S-ILS 16 **	367/24 200 (200-½)			
S-LOC 16	920/24 753 (800-½)	920/40 753 (800-¾)	920-1¾	753 (800-1¾)
CIRCLING	920-1 752 (800-1)	920-1¼ 752 (800-1¼)	920-2½	752 (800-2½)
GORDD FIX MINIMUMS %				
S-LOC 16	580/24 413 (500-½)		580/40 413 (500-¾)	
CIRCLING	660-1 492 (500-1)		700-1½ 532 (600-1½)	720-2 552 (600-2)

