

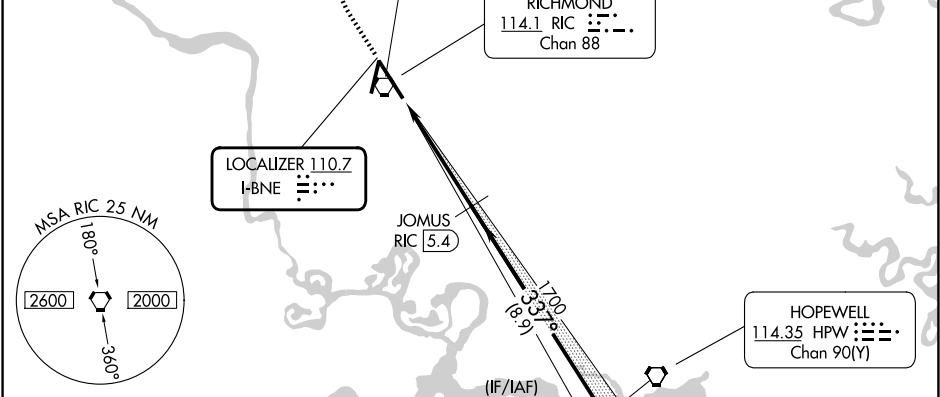
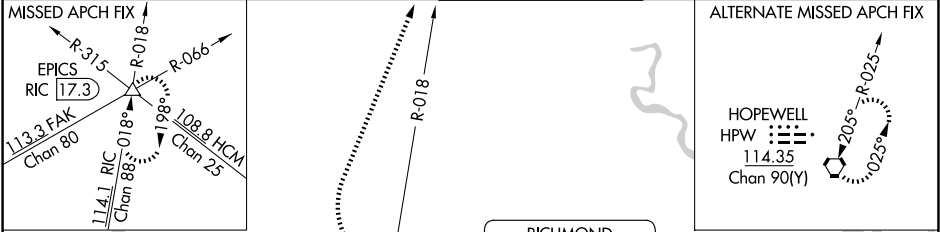
LOC I-BNE <b>110.7</b>	APP CRS <b>337°</b>	Rwy Ldg TDZE <b>161</b> Apt Elev <b>168</b>	<b>ILS RWY 34 (CAT II &amp; III)</b> RICHMOND INTL (RIC)
---------------------------	------------------------	---	---

DME from RIC VORTAC. DME use requires simultaneous reception of I-BNE and RIC DME. CAT II: RVR 1000 authorized with specific OPSPEC, MSPEC, or LOA approval and use of autoland or HUD to touchdown.

ALSIF-2

MISSED APPROACH: Climb to 800 then climbing right turn to 2000 on RIC VORTAC R-018 to EPICS INT/ RIC 17.3 DME and hold.

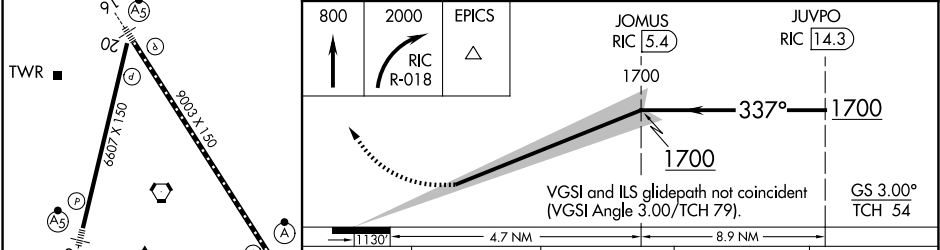
ATIS <b>119.15 263.025</b>	POTOMAC APP CON <b>126.4 282.375</b> (001°-185°) <b>126.75 307.2</b> (186°-360°)	RICHMOND TOWER <b>121.1 257.8</b>	GND CON <b>121.9 348.6</b>	CLNC DEL <b>127.55 348.6</b>
-------------------------------	--	--------------------------------------	-------------------------------	---------------------------------



JOMUS RIC 5.4

HOPEWELL 114.35 HPW Chan 90(Y)

(IF/IAF) JUVPO RIC 14.3



CATEGORY	A	B	C	D
S-ILS 34	CAT II RA 101/12 100 DA 261			
S-ILS 34	CAT III RVR 07			

TDZ/CL Rwy 34  
HIRL Rwsy 2-20 and 16-34  
REIL Rwy 20

**CATEGORY II & III ILS-SPECIAL AIRCREW & AIRCRAFT CERTIFICATION REQUIRED**