

(WADOL.WADOL4) 24025

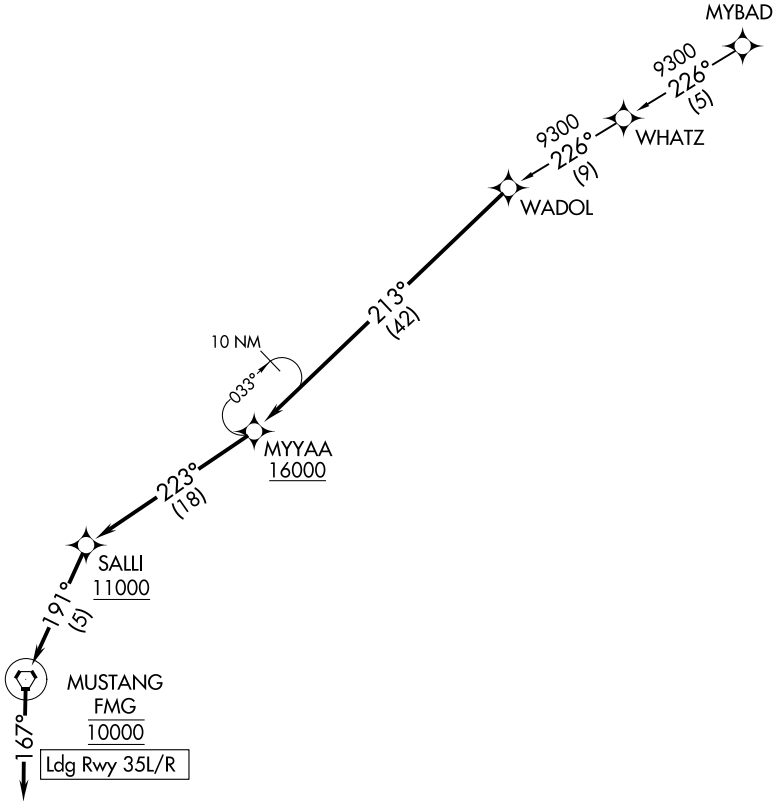
WADOL FOUR ARRIVAL (RNAV)

AL-346 (FAA)

RENO/TAHOE INTL (RNO)
RENO, NEVADA

NORCAL APP CON
126.3 353.9
D-ATIS
135.8 363.0
RENO TOWER
118.7 257.8

RNAV 1 - GPS.
RADAR required.



CAUTION: Intense glider activity to FL180.

NOTE: GPS required
NOTE: Chart not to scale.

ARRIVAL ROUTE DESCRIPTION

MYBAD TRANSITION (MYBAD.WADOL4)

From WADOL on track 213° to cross MYAA at or above 16000, then on track 223° to cross SALLI at or above 11000, then on track 191° to cross FMG VORTAC at 10000, then on heading 167°. Expect assigned instrument approach Rwy 35L/R or RADAR vectors to final approach course.

WADOL FOUR ARRIVAL (RNAV)

(WADOL.WADOL4) 25JAN24

RENO, NEVADA
RENO/TAHOE INTL (RNO)

SW-4, 07 AUG 2025 to 04 SEP 2025

SW-4, 07 AUG 2025 to 04 SEP 2025