

RENO, NEVADA

AL-346 (FAA)

25107

WAAS CH 40409 W35B	APP CRS 347°	Rwy Idg 9000 TDZE 4408 Apt Elev 4415
--	------------------------	---

RNAV (GPS) Y RWY 35R
RENO/TAHOE INTL (RNO)

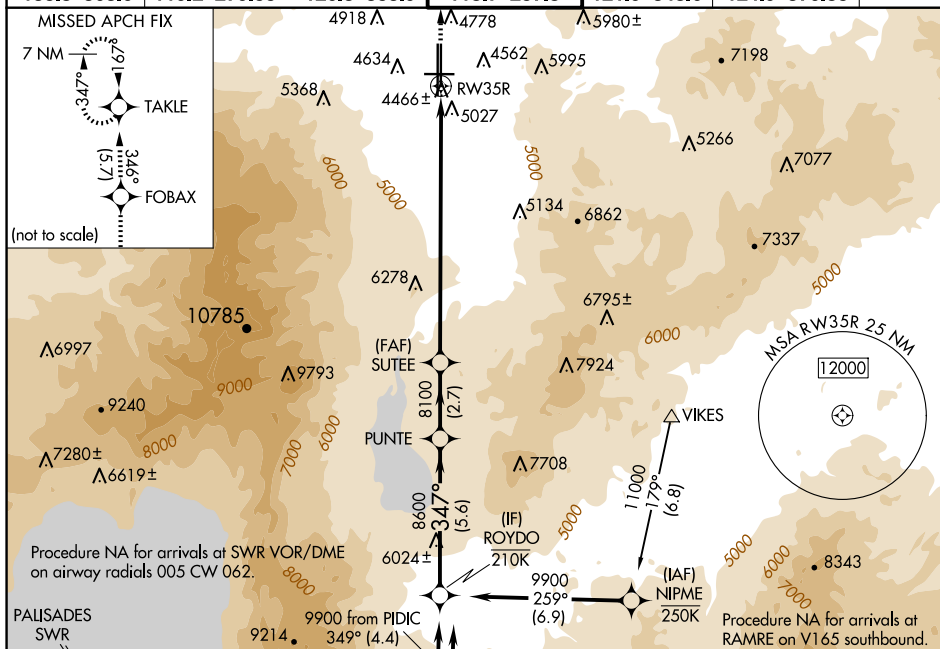
RNP APCH - GPS.

T Rwy 35R helicopter visibility reduction below
A NA $\frac{3}{4}$ SM NA.
S 12°C

MISSED APPROACH: Climb to 11000 direct FOBAX and on track 346° to TAKLE and hold, continue climb-in-hold to 11000.

*Missed approach requires minimum climb of 250 feet per NM to 6100.

D-ATIS	NORCAL APP CON				RENO TOWER	GND CON	CLNC DEL	CPDLC
135.8 363.0	119.2	279.55	126.3	353.9	118.7 257.8	121.9 348.6	124.9 370.85	



PALISADES

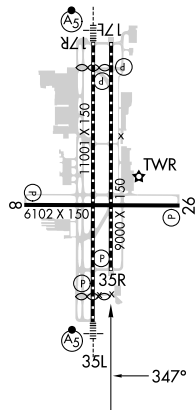
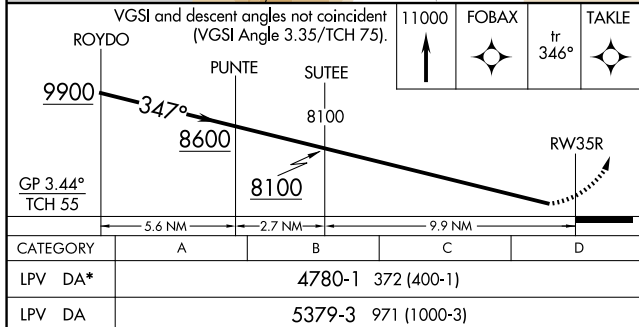
Procedure NA for arrivals at
RICHY on V28-113
southwest bound.

ELEV 4415	D	TDZE 4408
-----------	----------	-----------

HIRL Rwy 17R-35L and 17L-35R

REIL Rwy's 8, 17L, 26, and 35R

MIRL Rwy 8-26



RENO, NEVADA

Amdt 1 03NOV22

39°30'N-119°46'W

RENO/TAHOE INTL (RNO)

RNAV (GPS) Y RWY 35R

SW-4, 07 AUG 2025 to 04 SEP 2025

SW-4, 07 AUG 2025 to 04 SEP 2025