

RENO, NEVADA

AL-346 (FAA)

25107

WAAS CH 78309 W17B	APP CRS 167°	Rwy Idg 10001 TDZE 4415 Apt Elev 4415
--	------------------------	--

RNAV (GPS) X RWY 17R
RENO/TAHOE INTL (RNO)

RFNO/TAHOF INTI (RNO)

RNP APCH - GPS.



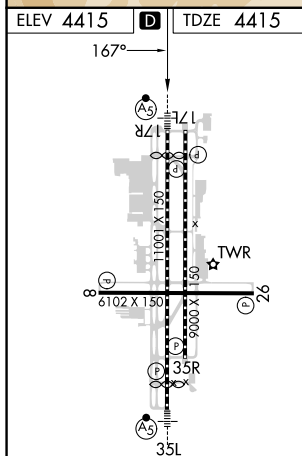
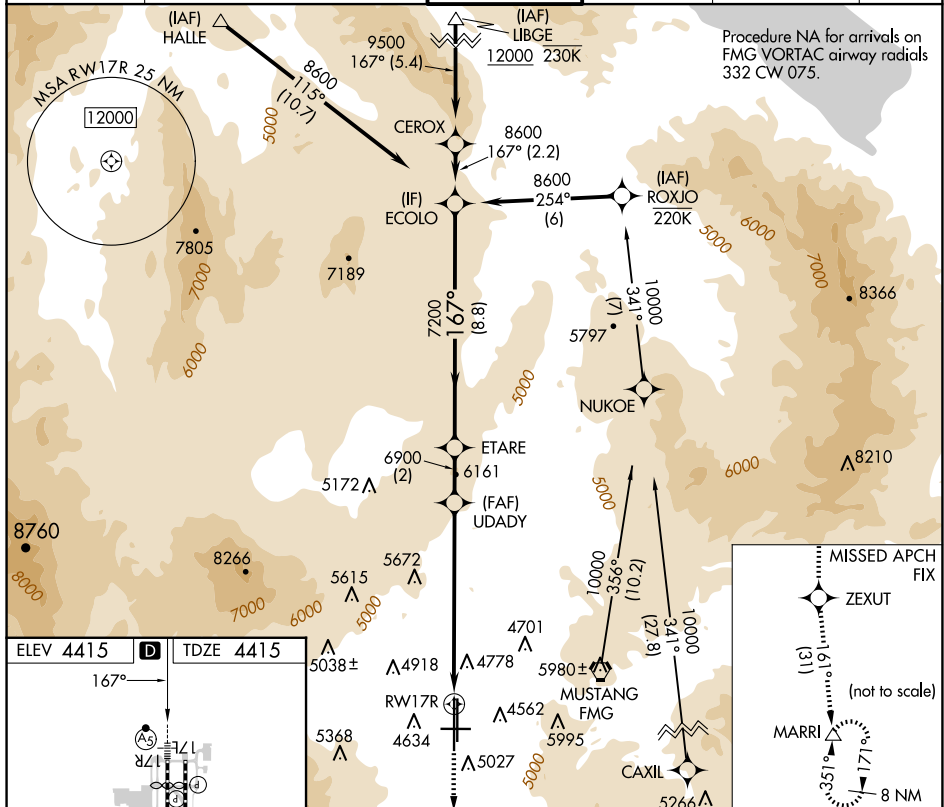
For inop ALS, increase LPV all Cats visibility to 2 ½ SM.
Inop table does not apply to LNAV all Cats.

MALSR

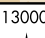

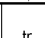



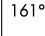

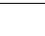
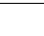
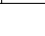



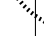



MISSED APPROACH: Climb to 13000 direct ZEXUT and on track 161° to MARRI and hold.

D-ATIS	NORCAL APP CON				RENO TOWER		GND CON	CLNC DEL	CPDLC
135.8 363.0	119.2	279.55	126.3	353.9	118.7	257.8	121.9 348.6	124.9 370.85	



MIRL Rwy 8-26
REIL Rwys 8, 17L, 26, and 35R
HIRL Rwys 17R-35L and 17L-35R

   		VGSI and RNAV glidepath not coincident (VGSI Angle 3.06/TCH 77).		ECOLO	
 		 		8600	
					
					
					
CATEGORY		A		B	
LPV DA		5239-1 $\frac{7}{8}$		824 (900-1 $\frac{7}{8}$)	
LNAV MDA		6200/40 1785 (1800- $\frac{3}{4}$)		6200/55 1785 (1800-1)	
		6200-3		1785 (1800-3)	

RENO, NEVADA

Amdt 2 03NOV22

39°30'N-119°46'W

RENO/TAHOE INTL (RNO)

RNAV (GPS) X RWY 17R

SW-4, 07 AUG 2025 to 04 SEP 2025

SW-4, 07 AUG 2025 to 04 SEP 2025