

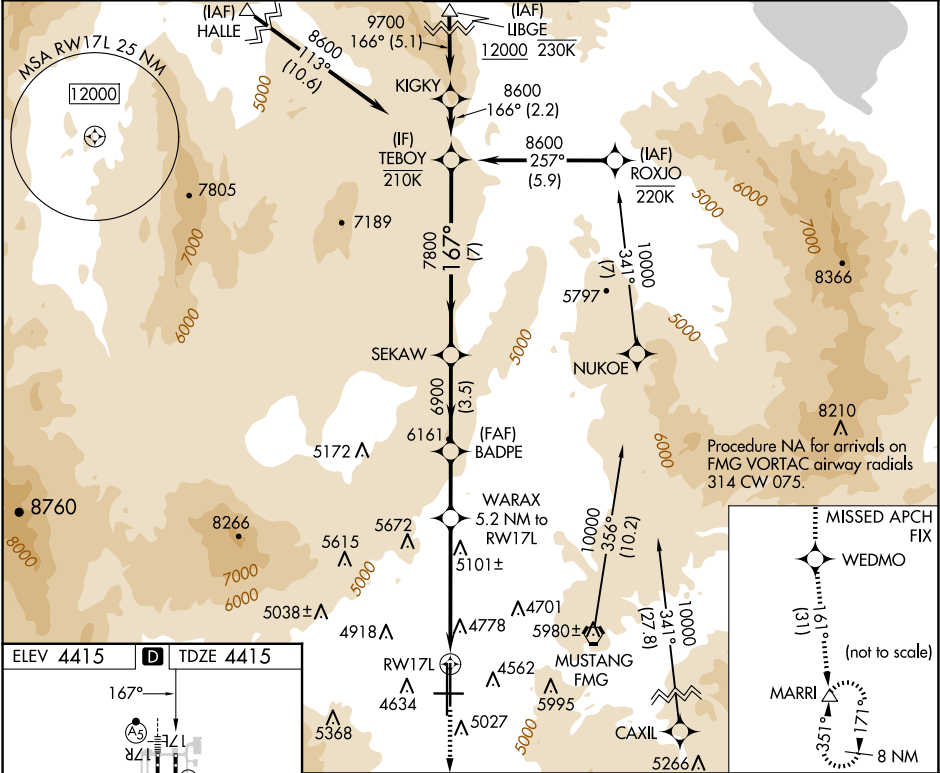
WAAS CH 72909 W17A	APP CRS 167°	Rwy Idg TDZE 4415 Apt Elev 4415
----------------------------------------	------------------------	-----------------------------------------------------

RNAV (GPS) X RWY 17L

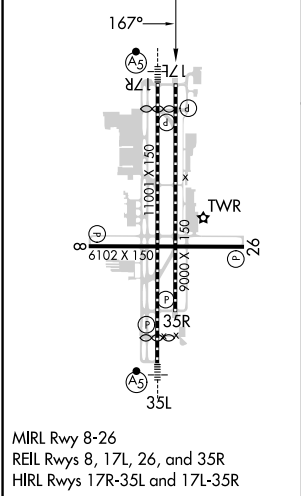
RENO/TAHOE INTL (RNO)

RNP APCH - GPS.		<div>MISSED APPROACH: Climb to 13000 direct WEDMO and on track 161° to MARRI and hold.</div>
<div><div><div></div><div></div></div><div><div></div><div></div></div></div>	Circling Rwy 8 NA at night. Rwy 17L helicopter visibility reduction below ¾ SM NA. For uncompensated Baro-VNAV systems, LNAV/VNAV NA below -9°C or above 54°C.	
<div><div><div></div><div></div></div><div><div></div><div></div></div></div>		

D-ATIS 135.8 363.0	NORCAL APP CON 119.2 279.55 126.3 353.9	RENO TOWER 118.7 257.8	GND CON 121.9 348.6	CLNC DEL 124.9 370.85	CPDLC
------------------------------	---------------------------------------------------	----------------------------------	-------------------------------	---------------------------------	-------



ELEV 4415	D	TDZE 4415
-----------	----------	-----------



MIRL Rwy 8-26
REIL Rwy 8, 17L, 26, and 35R
HIRL Rwy 17R-35L and 17L-35R

13000 WEDMO		MARRI	VGSI and RNAV glidepath not coincident (VGSI Angle 3.00/TCH 75).		TEBOY
↑		tr 161°			
RW17L		WARAX 5.2 NM to RW17L	BADPE 6900	SEKAW 7800	8600
2.7 NM to RW17L		2.5 NM	2.4 NM	3.5 NM	7 NM
CATEGORY	A	B	C	D	
LPV DA	5109-2		694 (700-2)		
LNAV/VNAV DA	5094-1 7/8		679 (700-1 7/8)		
LNAV MDA	5360-1 1/4	945 (1000-1 1/4)	5360-2 1/2	945 (1000-2 1/2)	
C CIRCLING	5360-1 1/4	945 (1000-1 1/4)	5360-1 1/2	945 (1000-1 1/2)	6460-3 2045 (2100-3)