

25107

RNAV (RNP) Z RWY 35L  
RENO/TAHOE INTL (RNO)

**MISSED APCH FIX**

7 NM

347° 16°

TAKLE

5038 ±

4918 Δ

4778 Δ

5980 ±

Δ 5196 ±

6000

5368 Δ

4634 Δ

RW35L

347° (12.6)

4562 Δ

Δ 5995

7198 •

Δ 5266

Δ 7077

5134 Δ

6862 •

7337 •

6278 Δ

347° (6.5)

5027 Δ

6900

(FAF) GUKCE

Δ 6795 ±

Δ 7924

Δ 7708

Δ 6997

9240 •

Δ 6429 ±

7280 ± Δ

Δ 6619 ±

8000

9000

Δ 9793

6024 ±

6739 ± Δ

9214 •

Δ 6991

11000

347° (17.5)

9150

8200

347° (5.7)

(IF) MASUE

(IAF) SPOON (RNP 0.30) 230K

(IAF) TARVR (RNP 0.30) 14000

MSA RW35L 25 NM

12000

8343 •

5000

6000

7000

**ELEV 4415** **D** **TDZE 4410**

REIL Rwy 8, 17L, 26, and 35R

HIRL Rwy 17R-35L and 17L-35R

MIRL Rwy 8-26

AS

17L

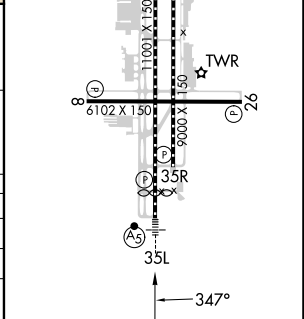
17R

26

35L

35R

8



RENO/TAHOE INTL (RNO)

RNAV (RNP) Z RWY 35L

SW-4, 07 AUG 2025 to 04 SEP 2025