

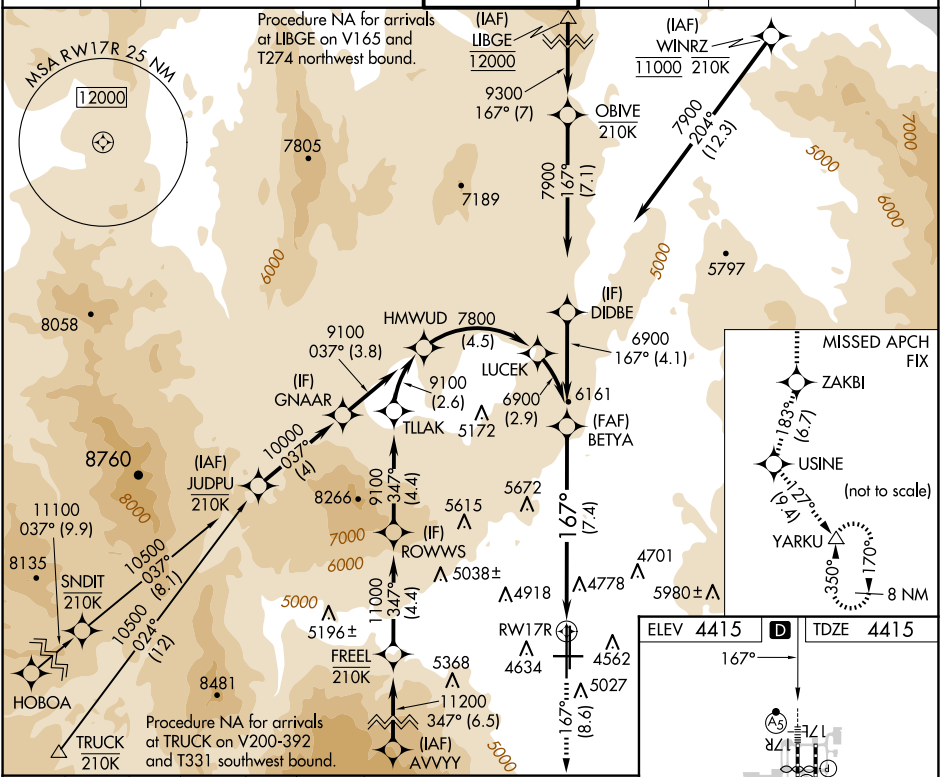
APP CRS	Rwy Idg	10001
167°	TDZE	4415
	Apt Elev	4415

RNAV (RNP) Z RWY 17R

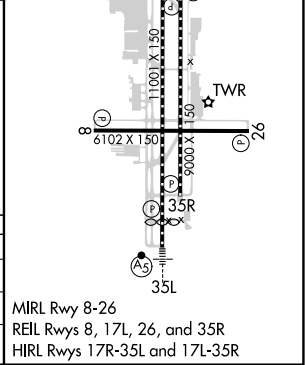
RENO/TAHOE INTL (RNO)

RNP AR APCH - GPS.	MALSR	MISSED APPROACH: Climb to 13000 on track 167° to ZAKBI and on track 183° to USINE and on track 127° to YARKU and hold, continue climb-in-hold to 13000. *Missed approach requires minimum climb of 266 feet per NM to 7240.
▼ -13°C For uncompensated Baro-VNAV systems, procedure NA below -9°C or above 54°C. For inop ALS, increase RNP 0.30 DA visibility all Cats to 1½ SM.		

D-ATIS	NORCAL APP CON	RENO TOWER	GND CON	CLNC DEL	CPDLC
135.8 363.0	119.2 279.55 126.3 353.9	118.7 257.8	121.9 348.6	124.9 370.85	



13000	ZAKBI	USINE	YARKU	BETYA
tr 167°	tr 183°	tr 127°	△	6900
See planview for multiple IF locations.				
RW17R				
VGSi and RNAV glidepath not coincident (VGSi Angle 3.06/TCH 77).				
GP 3.10° TCH 60				
7.4 NM				
CATEGORY	A	B	C	D
RNP 0.10 DA*	4754/26 339 (400-½)			
RNP 0.30 DA	5092-1½ 677 (700-1½)			



AUTHORIZATION REQUIRED

SW-4, 07 AUG 2025 to 04 SEP 2025

SW-4, 07 AUG 2025 to 04 SEP 2025