

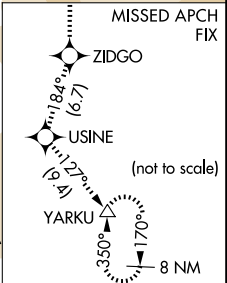
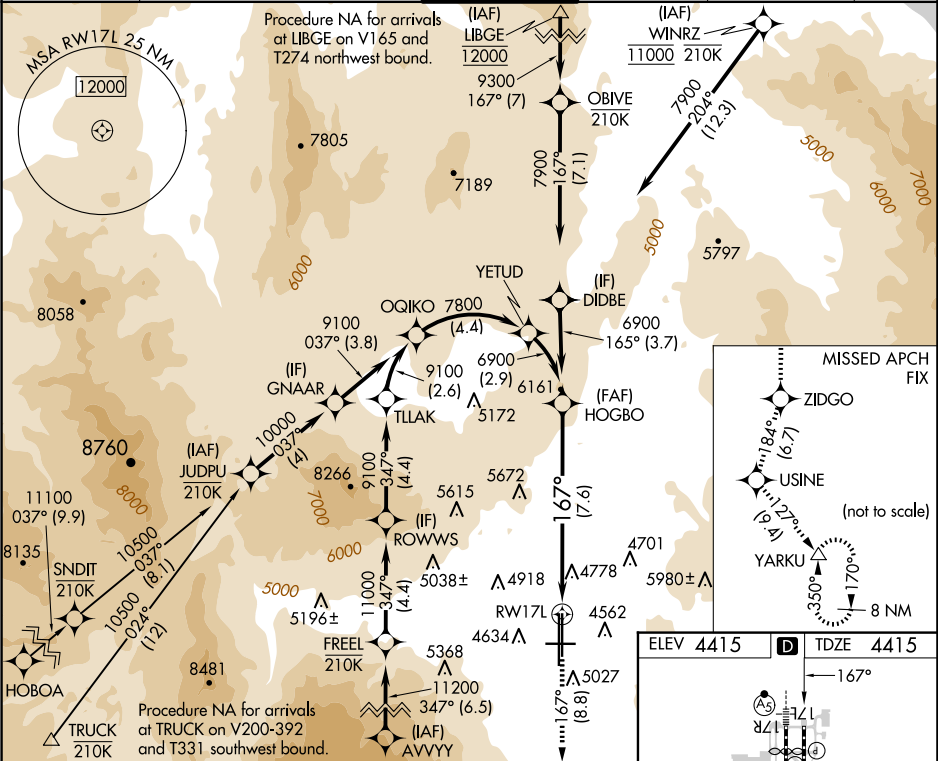
APP CRS	Rwy Idg	9000
167°	TDZE	4415
	Apt Elev	4415

RNAV (RNP) Z RWY 17L

RENO/TAHOE INTL (RNO)

RNP AR APCH - GPS.	MISSED APPROACH: Climb to 13000 on track 167° to ZIDGO and on track 184° to USINE and on track 127° to YARKU and hold, continue climb-in-hold to 13000. # Missed approach requires minimum climb of 203 feet per NM to 5040. * Missed approach requires minimum climb of 264 feet per NM to 7260.
▼ -13°C	For uncompensated Baro-VNAV systems, procedure NA below -5°C or above 54°C.

D-ATIS	NORCAL APP CON	RENO TOWER	GND CON	CLNC DEL	CPDLC
135.8 363.0	119.2 279.55 126.3 353.9	118.7 257.8	121.9 348.6	124.9 370.85	



13000	ZIDGO	USINE	YARKU	HOGBO
tr 167°	tr 184°	tr 127°		6900
See planview for multiple IF locations.				
RWY 17L				
7.6 NM				
GP 3.00° TCH 75				
CATEGORY	A	B	C	D
RNP 0.12 DA*	4754-1 339 (400-1)			
RNP 0.17 DA#	5017-1¾ 602 (700-1¾)			
RNP 0.30 DA	5067-1⅞ 652 (700-1⅞)			

