

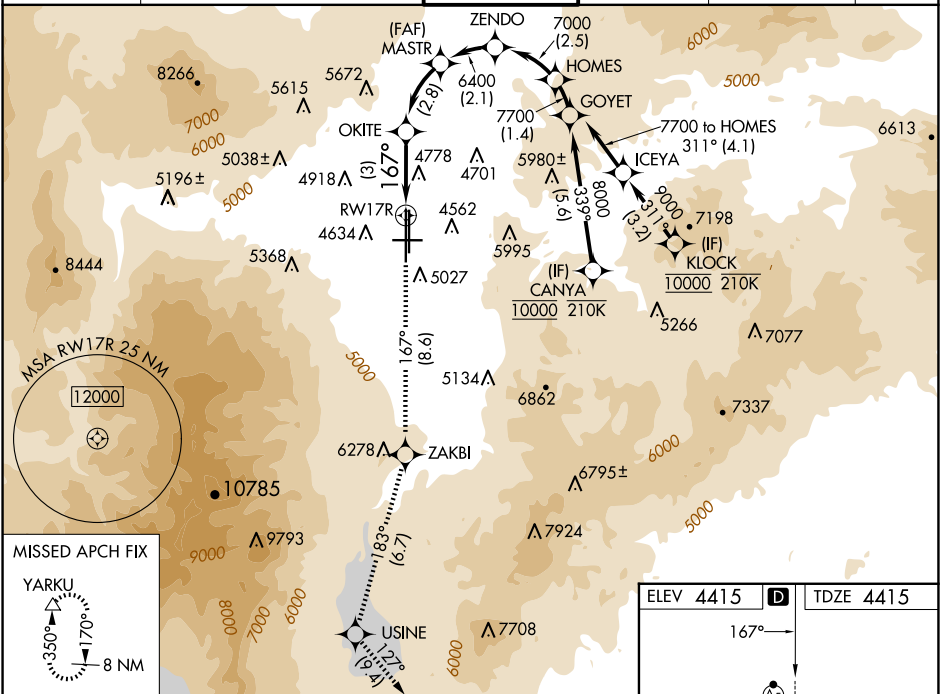
APP CRS	Rwy Idg	10001
167°	TDZE	4415
	Apt Elev	4415

RNAV (RNP) Y RWY 17R

RENO/TAHOE INTL (RNO)

RNP AR APCH - GPS.		MALSR	MISSED APPROACH: Climb to 13000 on track 167° to ZAKBI and on track 183° to USINE and on track 127° to YARKU and hold, continue climb-in-hold to 13000. #Missed approach requires minimum climb of 222 feet per NM to 7220. *Missed approach requires minimum climb of 266 feet per NM to 7240.
For uncompensated Baro-VNAV systems, procedure NA below -9°C or above 54°C. For inop ALS, increase RNP 0.1 DA all Cats visibility to RVR 5500, increase RNP 0.2 DA all Cats visibility to 1% SM, increase RNP 0.3 DA all Cats visibility to 1% SM.			

D-ATIS	NORCAL APP CON		RENO TOWER	GND CON	CLNC DEL	CPDLC
135.8 363.0	119.2 279.55	126.3 353.9	118.7 257.8	121.9 348.6	124.9 370.85	



13000 ↑ tr 167°	ZAKBI ✧	USINE tr 183° ✧	YARKU tr 127° △	See planview for multiple IF locations.		
CATEGORY	A		B		C	D
RNP 0.10 DA*			4759/30		344 (400-5%)	
RNP 0.20 DA#			4985-1¼		570 (600-1¼)	
RNP 0.30 DA			5091-1½		676 (700-1½)	
AUTHORIZATION REQUIRED						

