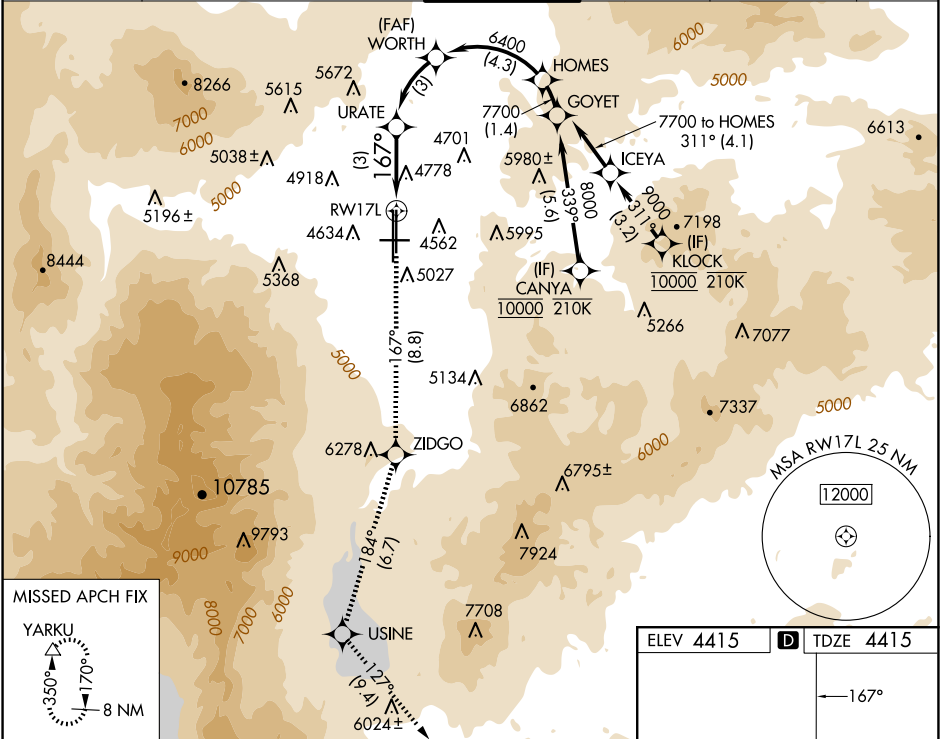


| | | |
|---------|----------|------|
| APP CRS | Rwy Idg | 9000 |
| 167° | TDZE | 4415 |
| | Apt Elev | 4415 |

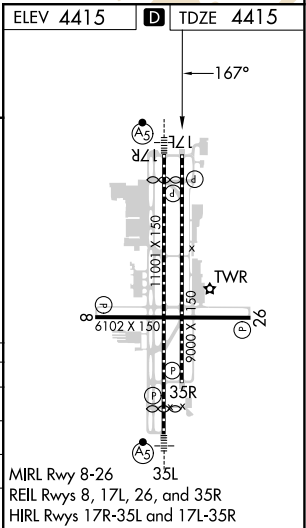
RNAV (RNP) Y RWY 17L
RENO/TAHOE INTL (RNO)

| | | | |
|--------------------|---|---|--|
| RNP AR APCH - GPS. | | MISSED APPROACH: Climb to 13000 on track 167° to ZIDGO and on track 184° to USINE and on track 127° to YARKU and hold, continue climb-in-hold to 13000. | |
| ▼ | For uncompensated Baro-VNAV systems, procedure NA below -9°C or above 54°C. | * Missed approach requires minimum climb of 252 feet per NM to 7200. * Missed approach requires minimum climb of 203 feet per NM to 5040. | |
| ⚠ -13°C | | | |

| | | | | | | |
|-------------|----------------|-------------|-------------|-------------|--------------|-------|
| D-ATIS | NORCAL APP CON | | RENO TOWER | GND CON | CLNC DEL | CPDLC |
| 135.8 363.0 | 119.2 279.55 | 126.3 353.9 | 118.7 257.8 | 121.9 348.6 | 124.9 370.85 | |



| | | | | | |
|------------------------|---------|---------|--------------|---|---|
| 13000 | ZIDGO | USINE | YARKU | See planview for multiple IF locations. | |
| ↑ tr 167° | ✱ | tr 184° | ✱ | tr 127° | △ |
| URATE | | WORTH | | HOMES | |
| 6400 | | 6400 | | 7700 | |
| RW17L | | 5445 | | GP 3.00° TCH 75 | |
| 3 NM | | 3 NM | | 4.3 NM | |
| CATEGORY | A | B | C | D | |
| RNP 0.12 DA* | 4754-1 | | 339 (400-1) | | |
| RNP 0.17 DA# | 5017-1¾ | | 602 (700-1¾) | | |
| RNP 0.30 DA | 5067-1⅞ | | 652 (700-1⅞) | | |
| AUTHORIZATION REQUIRED | | | | | |



SW-4, 07 AUG 2025 to 04 SEP 2025

SW-4, 07 AUG 2025 to 04 SEP 2025