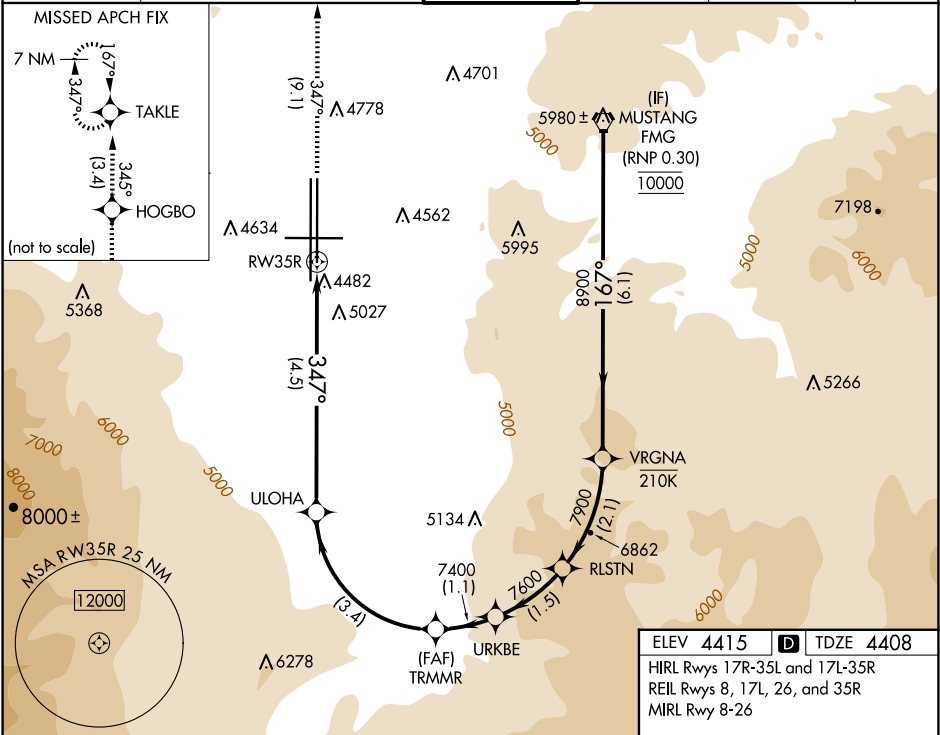




APP CRS	Rwy Idg	9000
347°	TDZE	4408
	Apt Elev	4415

RNAV (RNP) W RWY 35R

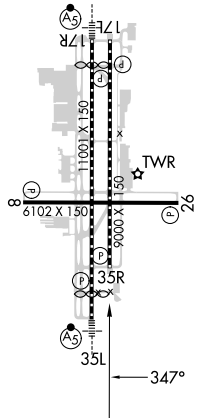
RENO/TAHOE INTL (RNO)

RNP AR APCH - GPS.				MISSED APPROACH: Climb to 11000 on track 347° to HOGBO and on track 345° to TAKLE and hold, continue climb-in-hold to 11000.			
For uncompensated Baro-VNAV systems, procedure NA below -9°C or above 34°C.				*Missed approach requires minimum climb of 301 feet per NM to 7150.			
D-ATIS				RENO TOWER		GND CON	
135.8 363.0				118.7 257.8		121.9 348.6	
NORCAL APP CON				CLNC DEL		CPDLC	
119.2 279.55 126.3 353.9				124.9 370.85			



FMG VORTAC		VRGNA	RLSTN	URKBE	11000 ↑ tr 347°	HOGBO 	tr 345°	TAKLE 
10000		8900	7900	7600	7400	6156	RW35R	
GP 3.50° TCH 75		6.1 NM		2.1 NM	1.5 NM	1.1 NM	3.4 NM	4.5 NM
CATEGORY		A		B		C		D
RNP 0.11 DA*		4762-1 354 (400-1)						
RNP 0.30 DA		5349-2½ 941 (1000-2½)						
AUTHORIZATION REQUIRED								

ELEV 4415	D	TDZE 4408
HIRL Rwy 17R-35L and 17L-35R		
REIL Rwy 8, 17L, 26, and 35R		
MIRL Rwy 8-26		



SW-4, 07 AUG 2025 to 04 SEP 2025

SW-4, 07 AUG 2025 to 04 SEP 2025