

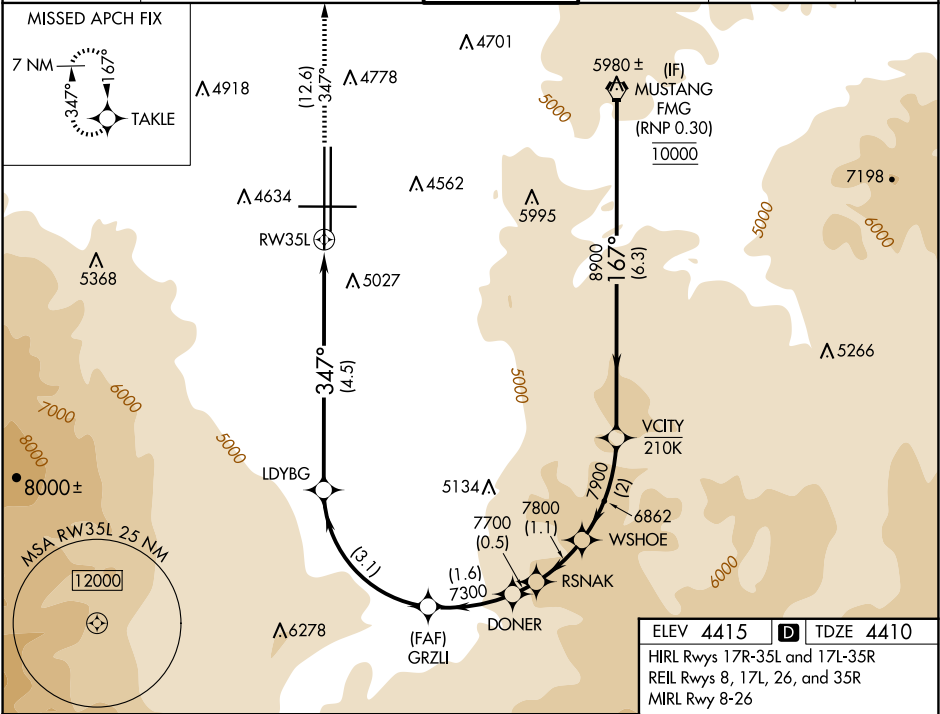
APP CRS	Rwy Idg	10011
347°	TDZE	4410
	Apt Elev	4415

# RNAV (RNP) W RWY 35L

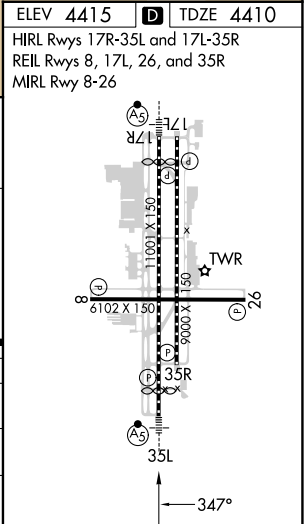
RENO/TAHOE INTL (RNO)

RNP AR APCH - GPS.	MALSR	MISSED APPROACH: Climb to 11000 on track 347° to TAKLE and hold, continue climb-in-hold to 11000. *Missed approach requires minimum climb of 300 feet per NM to 7140.
 -13°C		

D-ATIS	NORCAL APP CON	RENO TOWER	GND CON	CLNC DEL	CPDLC
135.8 363.0	119.2 279.55 126.3 353.9	118.7 257.8	121.9 348.6	124.9 370.85	



FMG VORTAC	VCITY	WSHOE	RSNAK	DONER	GRZLI	LDYBG	RW35L
10000	8900	7900	7800	7700	7300	6155	
GP 3.50° TCH 72							
	6.3 NM	2 NM	1.1 NM	0.5 NM	1.6 NM	3.1 NM	4.5 NM
CATEGORY	A	B	C	D			
RNP 0.10 DA*		4736-1/2	326 (400-1/2)				
RNP 0.30 DA		5349-2	939 (1000-2)				
AUTHORIZATION REQUIRED							



SW-4, 07 AUG 2025 to 04 SEP 2025

SW-4, 07 AUG 2025 to 04 SEP 2025