



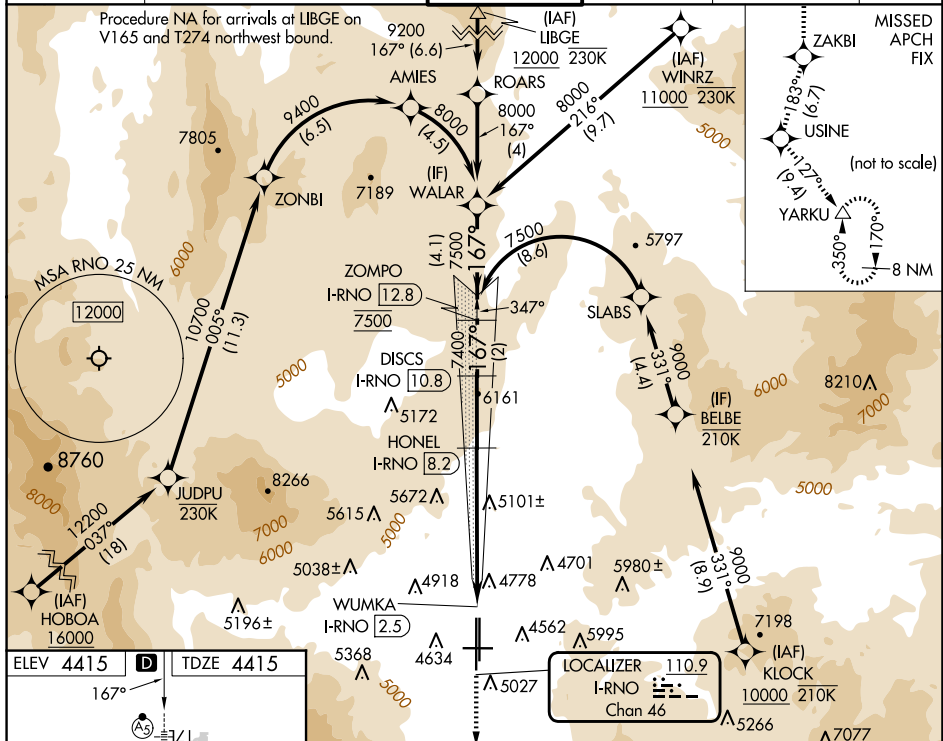


LOC/DME I-RNO <b>110.9</b> Chan <b>46</b>	APP CRS <b>167°</b>	Rwy Idg <b>10001</b> TDZE <b>4415</b> Apt Elev <b>4415</b>
---	------------------------	--

ILS Z or LOC Z RWY 17R  
RENO/TAHOE INTL (RNO)

DME required. RNP APCH - GPS. From HOBEO or KLOCK: RF			<p>MISSED APPROACH: Climb to 13000 on the RNAV missed approach route to YARKU and hold, continue climb-in-hold to 13000.</p> <p>*Missed approach requires minimum climb of 390 feet per NM to 8000.</p>
 Circling Rwy 8 NA at night.  # For inop ALS, increase S-ILS 17R all Cats visibility to 2 SM.  -13°C *RVR 1800 authorized with use of FD or AP or HUD to DA.			

D-ATIS	NORCAL APP CON				RENO TOWER		GND CON	CLNC DEL		CPDLC
135.8 363.0	119.2	279.55	126.3	353.9	118.7	257.8	121.9 348.6	124.9	370.85	



MIRL Rwy 8-26  
REIL Rws 8, 17L, 26, and 35R  
HIRL Rws 17R-35L and 17L-35R