

25107

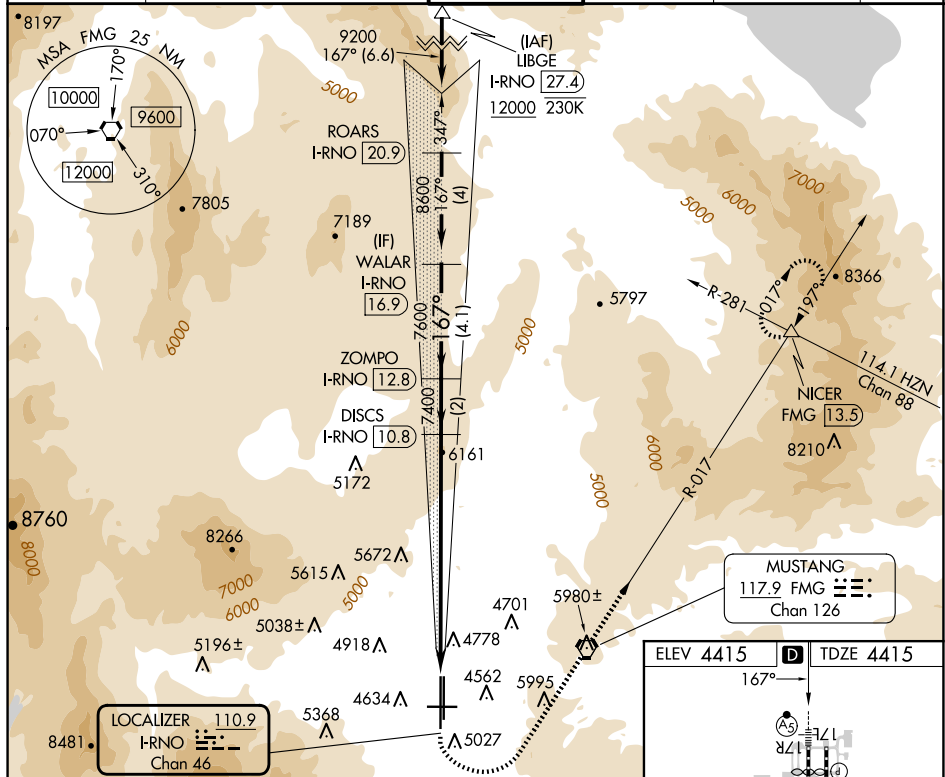
ILS Y RWY 17R
RENO/TAHOE INTL (RNO)


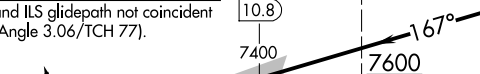
MALSR

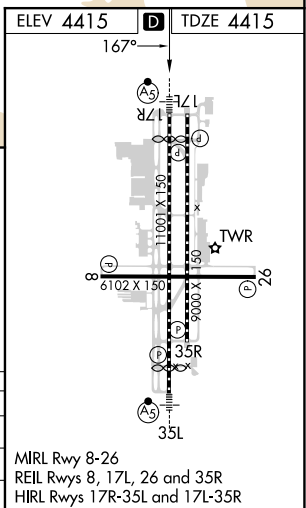
T # Inop table does not apply.
A † For inop ALS, increase S-ILS
☼ -13°C 17R visibility to $1\frac{3}{8}$ SM.

MISSED APPROACH: Climb to 6300 then climbing left turn to 11000 direct FMG VORTAC and on FMG VORTAC R-017 to NICER INT/FMG 13.5 DME and hold, continue climb-in-hold to 11000.
 * Missed approach requires minimum climb of 350 feet per NM to 8000.
 ** Missed approach requires minimum climb of 275 feet per NM to 8000.

D-ATIS	NORCAL APP CON				RENO TOWER		GND CON	CLNC DEL	CPDLC
135.8 363.0	119.2	279.55	126.3	353.9	118.7	257.8	121.9 348.6	124.9 370.85	



6300 ↑	11000 ↘	FMG R-017 	FMG R-017	NICER △	DISCS I-RNO 10.8	ZOMPO I-RNO 12.8	WALAR I-RNO 16.9
<p>VGSI and ILS glidepath not coincident (VGSI Angle 3.06/TCH 77).</p> 					<p>8600 167° 7600 7400 GS 3.10° TCH 59</p>		
CATEGORY	A		B	C		D	E
S-ILS 17R*†			4915/50	500 (500-1)			
S-ILS 17R**#			5415-4	1000 (1000-4)			
S-ILS 17R#			5915-5	1500 (1500-5)			

RENO/TAHOE INTL (RNO)
ILS Y RWY 17R

SW-4, 07 AUG 2025 to 04 SEP 2025