

LOC/DME I-RNO 110.9 Chan 46	APP CRS 167°	Rwy Idg 10001 TDZE 4415 Apt Elev 4415
---	------------------------	--

ILS X or LOC X RWY 17R
RENO/TAHOE INTL (RNO)

RENO/TAHOE INTL (RNO)

DME required. RNP APCH - GPS.

T Circling Rwy 8 NA at night.

A *RVR 1800 authorized with use of FD or AP or HUD to DA.

❄️ -13°C # For inop ALS, increase S-ILS 17R all Cats visibility to 2 SM.

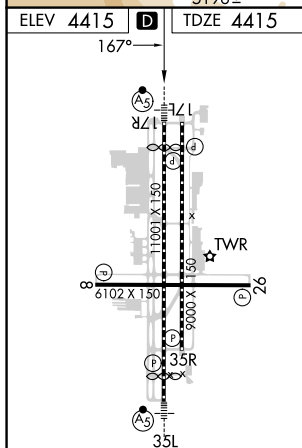
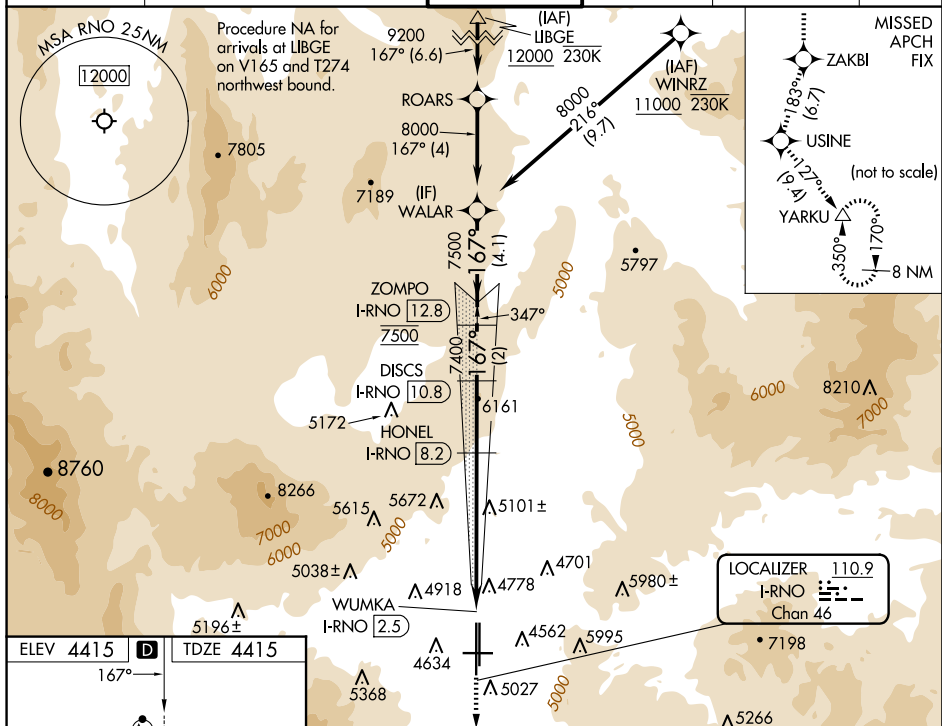
MALSR



MISSED APPROACH: Climb to 13000 on the RNAV missed approach route to YARKU and hold, continue climb-in-hold to 13000.

*Missed approach requires minimum climb of 390 feet per NM to 8000.

D-ATIS	NORCAL APP CON				RENO TOWER		GND CON		CLNC DEL		CPDLC
135.8 363.0	119.2	279.55	126.3	353.9	118.7	257.8	121.9	348.6	124.9	370.85	



MIRL Rwy 8-26

REIL Rwy 8, 17L, 26, and 35R

HIRL Rwys 17R-35L and 17L-35R

RENO, NEVADA

Amdt 1 03NOV22

39°30'N-119°46'W

RENO/TAHOE INTL (RNO)

ILS X or LOC X RWY 17R

SW-4, 07 AUG 2025 to 04 SEP 2025

SW-4, 07 AUG 2025 to 04 SEP 2025