

LOC/DME I-AGY
109.9
Chan **36**

APP CRS
347°

Rwy Idg
TDZE **4410**
Apt Elev **4415**

ILS or LOC RWY 35L

RENO/TAHOE INTL (RNO)

DME required.

Circling Rwy 8 NA at night. Inop table does not apply.

-13°C

MALSR

MISSED APPROACH: Climb to 11000 on heading 350° and on FMG VORTAC R-332 to PYRAM INT/FMG 22.2 DME and hold, continue climb-in-hold to 11000.

D-ATIS
135.8 363.0

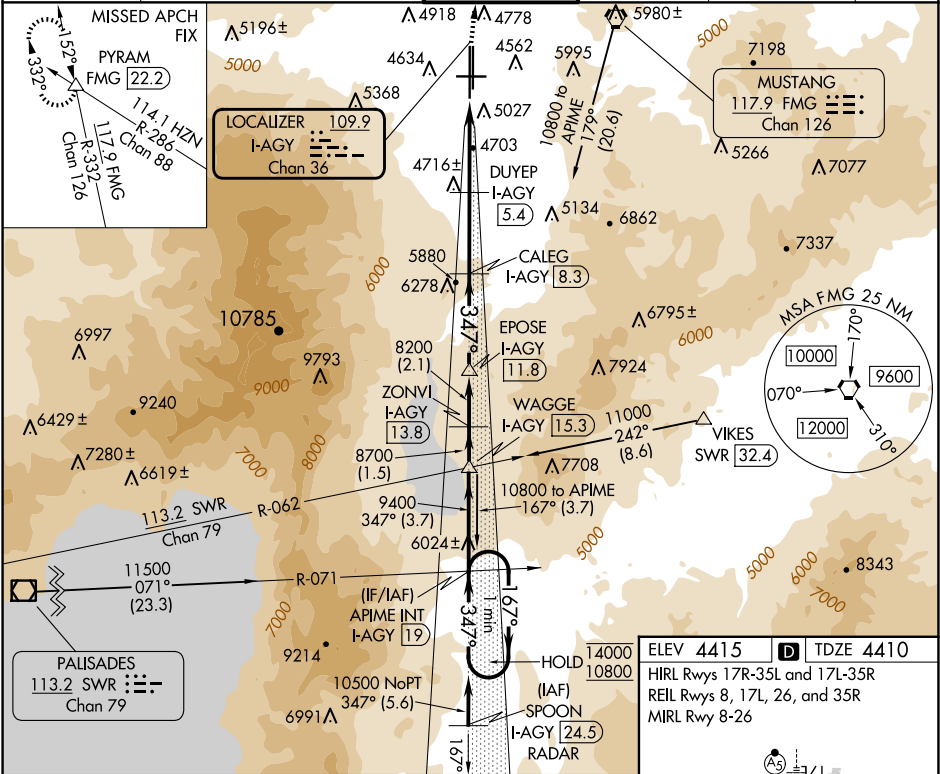
NORCAL APP CON
119.2 279.55 126.3 353.9

RENO TOWER
118.7 257.8

GND CON
121.9 348.6

CLNC DEL
124.9 370.85

CPDLC



APIME INT
One Minute Holding Pattern
14000
10800
GS 3.54°
TCH 51
VGSi and ILS glidepath not coincident
(VGSi Angle 3.54/TCH 72).

WAGGE
I-AGY 15.3
8200
8700
8200
5800

ZONVI
I-AGY 13.8
8200
8700
8200
5800

EPOSE
I-AGY 11.8
8200
8700
8200
5800

CALEG
I-AGY 8.3
8200
8700
8200
5800

DUYEP
I-AGY 5.4
8200
8700
8200
5800

FMG
R-332
11000
hdg 350°

PYRAM

CATEGORY	A	B	C	D
S-ILS 35L	5062-1½	652 (700-1½)		NA
S-LOC 35L	5120-1	710 (800-1)	5120-2 710 (800-2)	NA
CIRCLING	5340-1¼	925 (1000-1¼)	6460-3 2045 (2100-3)	NA