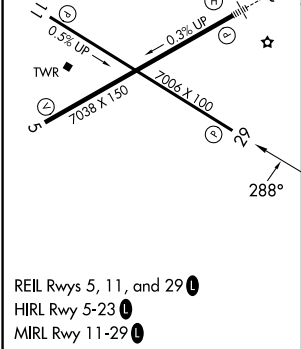
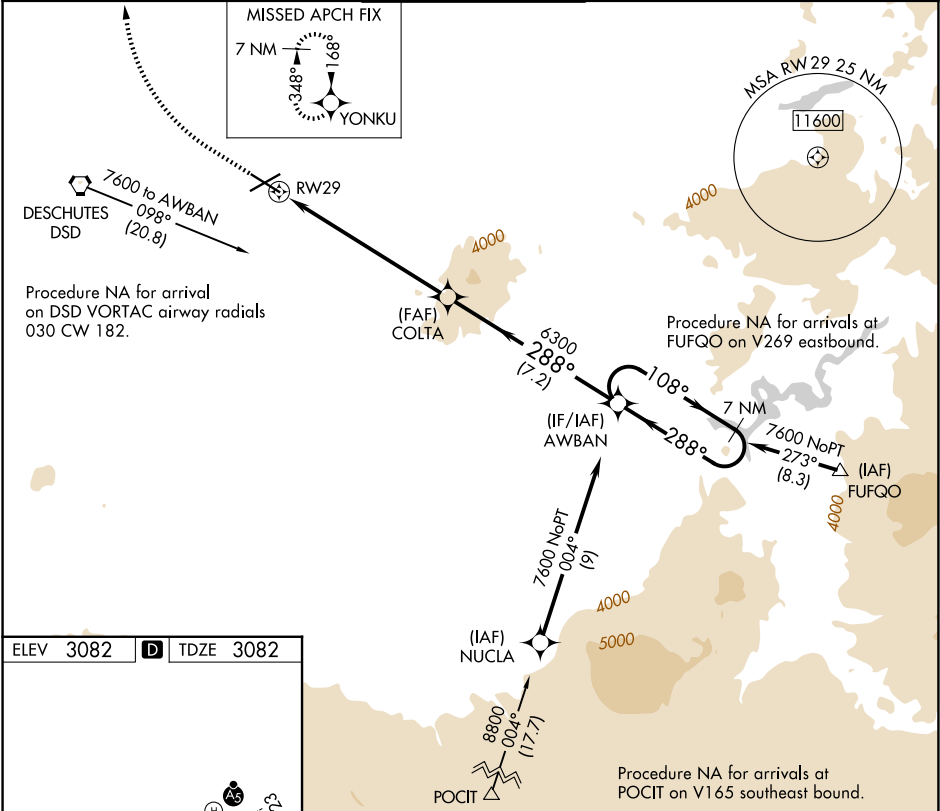


WAAS CH 90214 W29A	APP CRS 288°	Rwy Ldg TDZE Apt Elev	7006 3082 3082
--	------------------------	-----------------------------	---

RNAV (GPS) Z RWY 29

ROBERTS FLD (RDM)

RNP APCH-GPS.		MISSED APPROACH: Climb to 4000 then climbing right turn to 7000 direct YONKU and hold, continue climb-in-hold to 7000.		
For uncompensated Baro-VNAV systems, LNAV/VNAV NA below -18°C or above 43°C.				
ATIS 119.025		SEATTLE CENTER 126.15 269.475	REDMOND TOWER★ 124.5 (CTAF) 0 256.8	GND CON 121.8
				UNICOM 122.95



4000 7000 YONKU		VGSi and RNAV glidepath not coincident (VGSi Angle 3.00/TCH 50).		7 NM Holding Pattern
COLTA		AWBAN		
RW29		6300 288°		108° 7600
7.1 NM		7.2 NM		GP 4.20° TCH 43
CATEGORY	A	B	C	D
LPV DA	3368-1	286 (300-1)	NA	
LNAV/VNAV DA	3368-1	286 (300-1)	NA	

NW-1, 07 AUG 2025 to 04 SEP 2025

NW-1, 07 AUG 2025 to 04 SEP 2025