

LOC/DME I-RDM	APP CRS	Rwy Ldg	7031
<b>109.1</b>	<b>226°</b>	TDZE	<b>3067</b>
Chan <b>28</b>		Apt Elev	<b>3082</b>

ILS or LOC RWY 23

ROBERTS FLD (RDM)

DME required.

▼

▲

⚠

-16°C

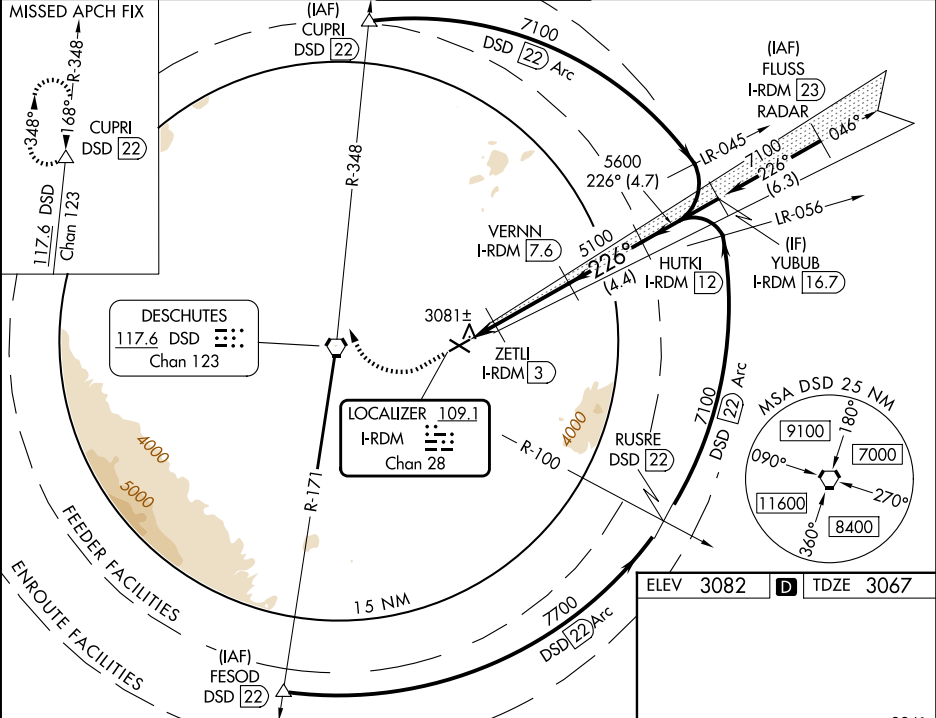
Autopilot coupled approach NA below 4370. When local altimeter setting not received, use Bend altimeter setting increase S-ILS 23 DA to 3348 feet; increase all MDAs 100 feet increase S-LOC 23 Cat C/D/E visibility ¾ SM and Circling Cats C/D/E visibility ½ SM. For inop ALS, increase S-ILS 23 Cat E visibility to ¾ SM and S-LOC 23 Cat C/D/E visibility to 1 SM. For inop ALS when using Bend altimeter setting increase S-ILS 23 all Cats visibility to ¾ SM and increase S-LOC 23 Cats C/D/E visibility to 1¾ SM. VDP NA when using Bend altimeter setting.

MALSR

AS

MISSED APPROACH: Climb to 3700 then climbing right turn to 7000 on heading 320° and DSD VORTAC R-348 to CUPRI/DS D 22 DME and hold.

ATIS	SEATTLE CENTER	REDMOND TOWER★	GND CON	UNICOM
<b>119.025</b>	<b>126.15 269.475</b>	<b>124.5 (CTAF) 0 256.8</b>	<b>121.8</b>	<b>122.95</b>



ELEV 3082	D	TDZE 3067
-----------	---	-----------

3700	7000	DS D	CUPRI	VGSI and ILS glidepath not coincident (VGSI Angle 3.00/TCH 51).	YUBUB I-RDM [16.7]
↑	hdg 320°	R-348	△		
Use I-RDM DME when on the localizer course.					
*LOC only	*I-RDM	I-RDM			
	[1.3]	[2.4]	[3]		
1.1 0.6 4.6 NM 4.4 NM 4.7 NM					
CATEGORY	A	B	C	D	E
S-ILS 23	3267-½ 200 (200-½)				
S-LOC 23	3440-½	373 (400-½)	3440-⅝	373 (400-⅝)	
CIRCLING	3540-1 458 (500-1)	3560-1 478 (500-1)	3640-1½ 558 (600-1½)	3740-2 658 (700-2)	3820-2½ 738 (800-2½)

