

RAPID CITY, SOUTH DAKOTA

# TACAN-A

VORTAC RAP <b>112.3</b> Chan <b>70</b>	APCH CRS <b>146°</b>	Rwy Idg <b>N/A</b> TDZE <b>N/A</b> Arpt Elev <b>3276</b>
--	-------------------------	--

- (USAF)

ELLSWORTH AFB (KRCA)

**T** \* CAT E circling restricted to 28th BW aircraft only; 28th BW aircraft will remain within Class D airspace.

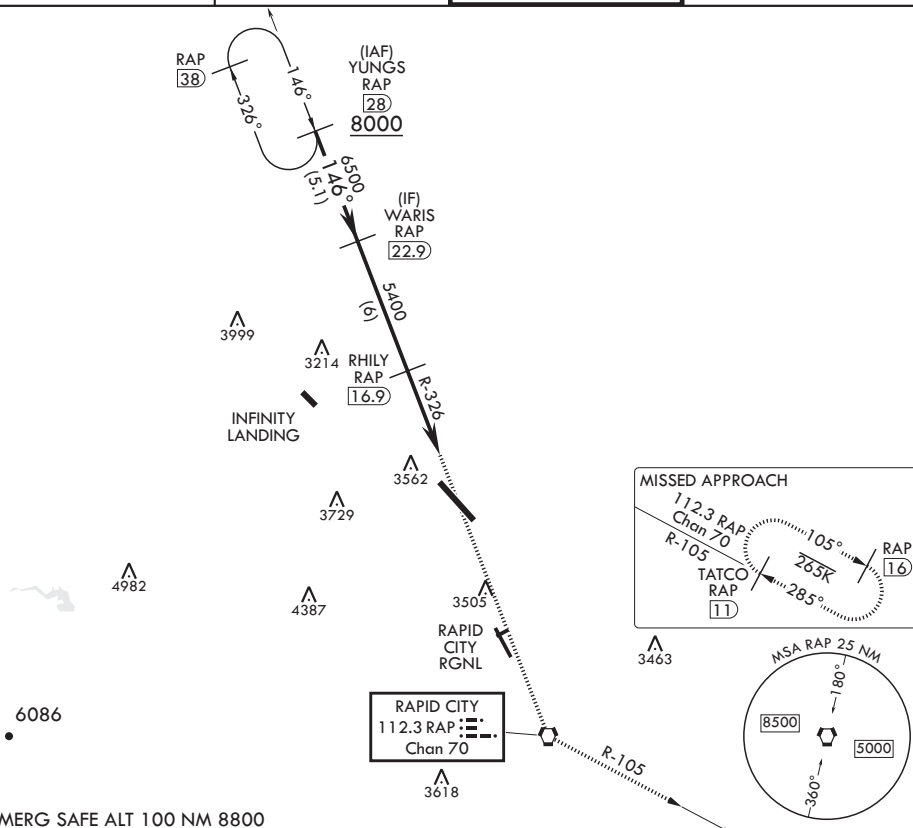
**MISSED APPROACH:** Track inbound RAP R-326 to RAP VORTAC then turn left to join RAP R-105 outbound to 11 DME and hold. Maintain 6000.

ATIS★  
120.625 269.9

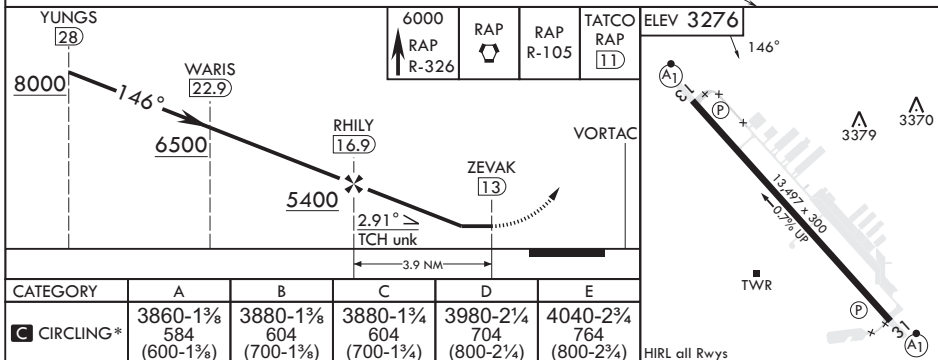
APP CON  
119.5 259.1

TOWER★  
126.05 253.5

GND CON  
121.8 275.8



EMERG SAFE ALT 100 NM 8800



RAPID CITY, SOUTH DAKOTA

44°09'N - 103°06'W

ELLSWORTH AFB (KRCA)

Amdt 2 22JUN17

## TACAN-A

NC-1, 07 AUG 2025 to 04 SEP 2025

NC-1, 07 AUG 2025 to 04 SEP 2025