

ILS or LOC Y RWY 13

LOC I-ELR <b><u>111.5</u></b>	APCH CRS <b>130°</b>	Rwy Idg <b>13,497</b> TDZE <b>3276</b> Arpt Elev <b>3276</b>
----------------------------------	-------------------------	--

[USAF]

ELLSWORTH AFB (KRCA)

RADAR or DME required.

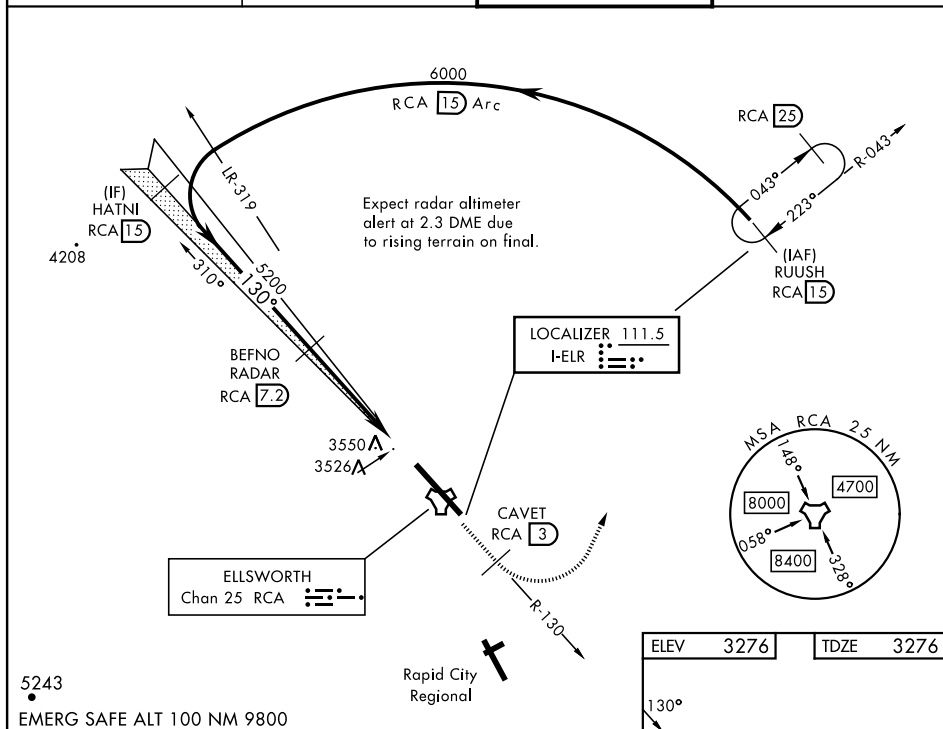
**V** \* When ALS inop, increase RVR to 40 and vis to  $\frac{3}{4}$  mile.  
**\*\*** When ALS inop, increase CAT AB RVR to 55 and vis to 1 mile, CAT CDE vis to  $1\frac{1}{8}$  miles.  
**\*\*\*** CAT E circling restricted to 28th BW aircraft only;  
 28th BW aircraft will remain within Class D airspace.

ALSF-1



**MISSED APPROACH:** Track outbound RCA R-130 to 3 DME (CAVET), then turn left to join RCA R-043 to 15 DME (RUUSH) and hold. Maintain 6000.

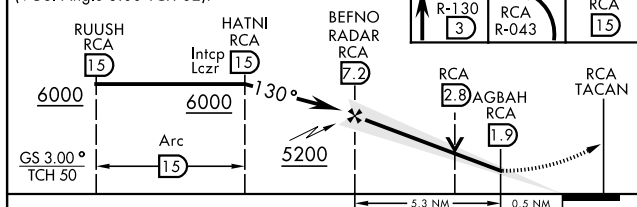
<p>ATIS ★</p> <p>120.625 269.9</p>	<p>APP CON</p> <p>119.5 259.1</p>	<p>TOWER ★</p> <p>126.05 253.5</p>	<p>GND CON</p> <p>121.8 275.8</p>
------------------------------------	-----------------------------------	------------------------------------	-----------------------------------




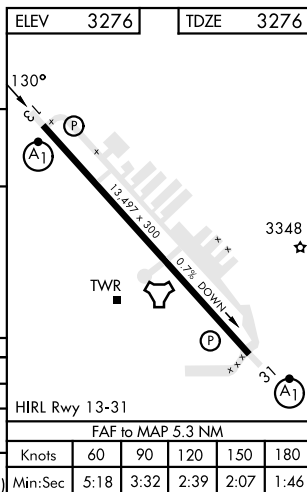
5243

EMERG SAFE ALT 100 NM 9800

VGSI and ILS glidepath not coincident (VGSI Angle 3.00 TCH 62).



CATEGORY	A	B	C	D	E
S-ILS 13 *	3476/24		200	(200-½)	
S-LOC 13 **	3780/24 504 (600-½)		3780/55 504 (600-1)		
 CIRCLING ***	3860-1 584 (600-1)	3880-1 604 (700-1)	3880-1½ 604 (700-13)	3980-2 ¼ 704 (800-2¼)	4040-2¾ 764 (800-2¾)



RAPID CITY, SOUTH DAKOTA

44°09'N-103°06'W

ELLSWORTH AFB (KRCA)

Amdt 1 15SEP16

ILS or LOC Y RWY 13

NC-1, 07 AUG 2025 to 04 SEP 2025

NC-1, 07 AUG 2025 to 04 SEP 2025