

RAPID CITY, SOUTH DAKOTA

TACAN RCA Chan 25	APCH CRS 302°	Rwy Idg 13,497 TDZE 3192 Arpt Elev 3276
----------------------	------------------	---

[USAF]

HI-TACAN Z RWY 31

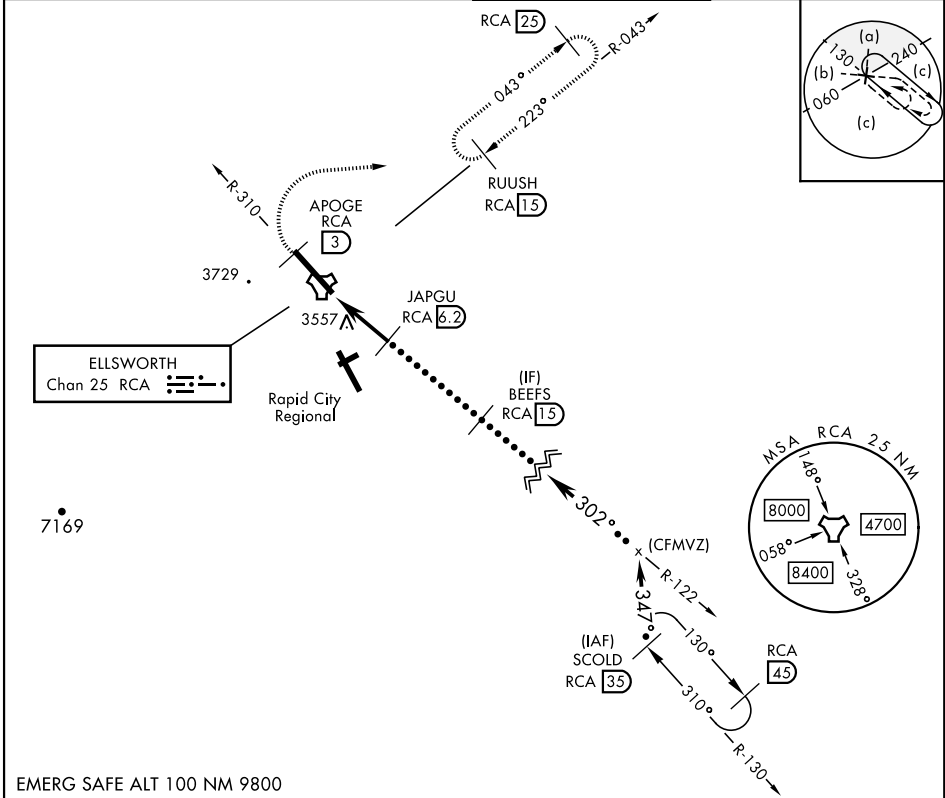
ELLSWORTH AFB (KRCA)

▼ * When ALS inop, increase CAT CDE vis to 1¾ mile.
** CAT E circling restricted to 28th BW aircraft only; 28th BW aircraft will remain within Class D airspace.

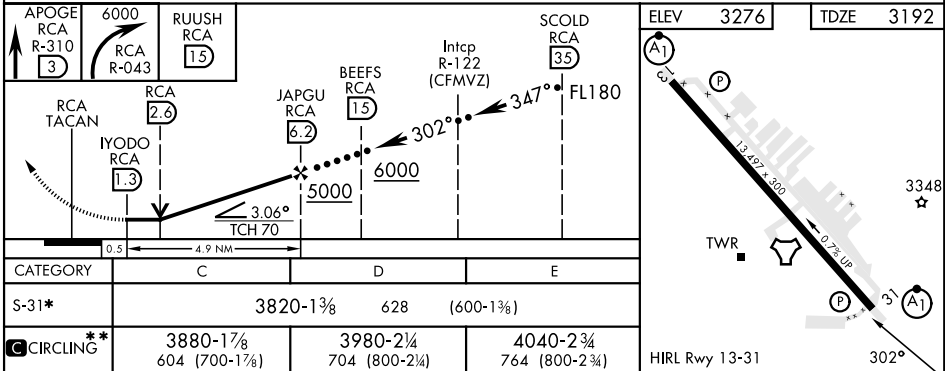


MISSED APPROACH: Track outbound RCA R-310 to 3 DME (APOGE), then turn right to join RCA R-043 to 15 DME (RUUSH) and hold. Maintain 6000.

ATIS ★ 120.625 269.9	APP CON 119.5 259.1	TOWER ★ 126.05 253.5	GND CON 121.8 275.8
-------------------------	------------------------	-------------------------	------------------------



EMERG SAFE ALT 100 NM 9800



RAPID CITY, SOUTH DAKOTA

44°09'N-103°06'W

ELLSWORTH AFB (KRCA)

Amdt 1 15SEP16

HI-TACAN Z RWY 31

NC-1, 07 AUG 2025 to 04 SEP 2025

NC-1, 07 AUG 2025 to 04 SEP 2025