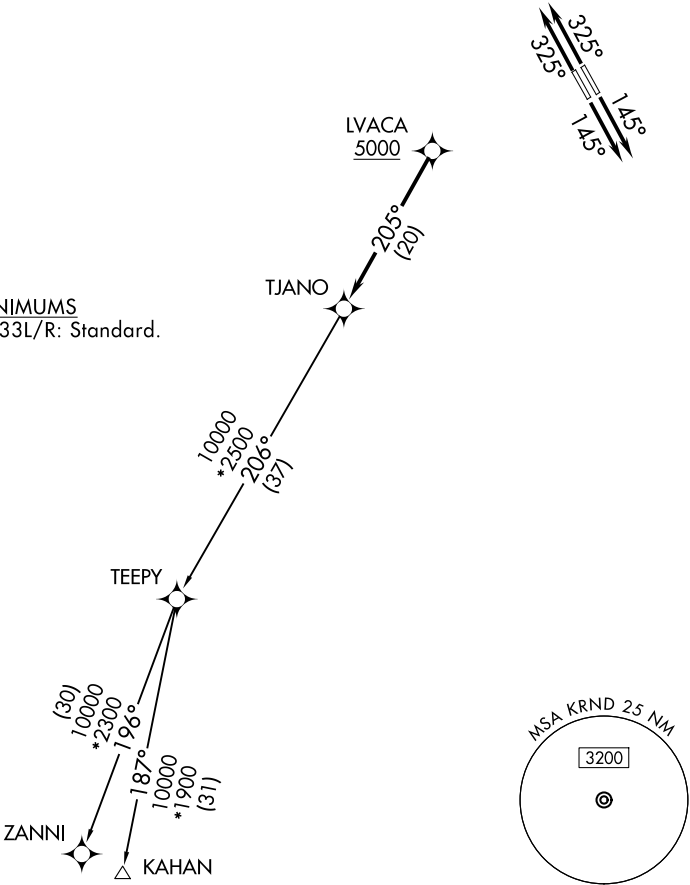


SAN ANTONIO DEP CON  
127.1 290.225  
ATIS ★  
290.525  
ATIS (HANGOVER) ★  
327.8  
CLNC DEL (15L-33R)  
338.35  
GND CON  
119.65 275.8  
GND CON (HANGOVER)  
124.75 353.75  
TOWER ★  
128.25 294.7  
HANGOVER TOWER ★  
120.5 291.1

RNAV 1 - DME/DME IRU or GPS.  
RADAR required for non-GPS equipped aircraft.  
RADAR required.

TOP ALTITUDE:  
ASSIGNED BY ATC

TAKEOFF MINIMUMS  
Rwys 15L/R, 33L/R: Standard.



NOTE: Chart not to scale.

DEPARTURE ROUTE DESCRIPTION

TAKEOFF RUNWAYS 15L/R: Climb on heading 145° or as assigned by ATC, for vectors to LVACA, thence. . .  
TAKEOFF RUNWAYS 33L/R: Climb on heading 325° or as assigned by ATC, for vectors to LVACA, thence. . .

. . .on track 205° to TJANO, then on transition. Maintain ATC assigned altitude.  
Expect filed altitude 10 minutes after departure.

KAHAN TRANSITION (TJANO2.KAHAN)  
ZANNI TRANSITION (TJANO2.ZANNI)