

UNIVERSAL CITY, TEXAS

TACAN RWY 33L

VORTAC RND 112.3 Chan 70	APCH CRS 323°	Rwy Idg 8352 TDZE 733 Arpt Elev 761
--	-------------------------	--

[USAF]

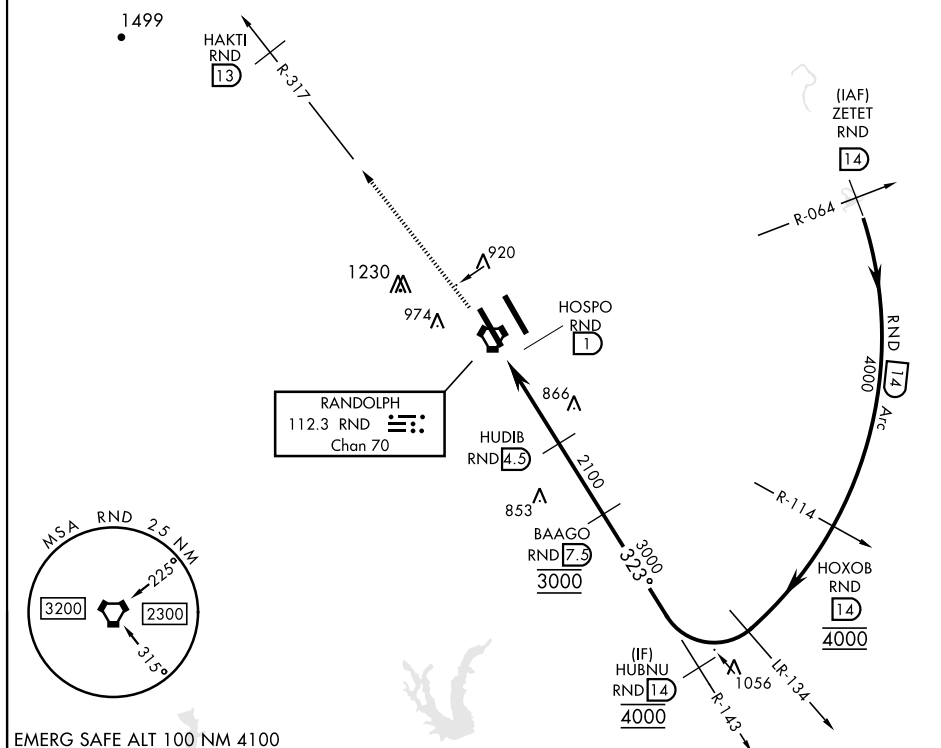
RANDOLPH AFB (KRND)

RADAR required

* Circling not authorized NE of Rwy 15R-33L.

MISSED APPROACH: Climb to 3000 out RND VORTAC R-317 to RND 13 DME (HAKTI). Expect ATC instructions.

ATIS ★	SAN ANTONIO APP CON	TOWER ★	GND CON	CLNC DEL (RWY 15L-33R)	HANGOVER ATIS ★	HANGOVER TOWER ★	HANGOVER GND CON
290.525	128.05 318.1	128.25 294.7	119.65 275.8	338.35	327.8	120.5 291.1	124.75 353.75



EMERG SAFE ALT 100 NM 4100

CATEGORY	A	B	C	D	E
S-33L	1120/55	387 (400-1)	1120/60	387 (400-1½)	
CIRCLING*	1240-1 479 (500-1)	1280-1 519 (600-1)	1500-2 739 (800-2)	2000-3 1239 (1300-3)	

UNIVERSAL CITY, TEXAS

29°32'N-98°17'W

RANDOLPH AFB (KRND)

Amdt 3 26DEC24

TACAN RWY 33L

SC-3, 07 AUG 2025 to 04 SEP 2025

SC-3, 07 AUG 2025 to 04 SEP 2025