

SNIDR TWO DEPARTURE (RNAV)

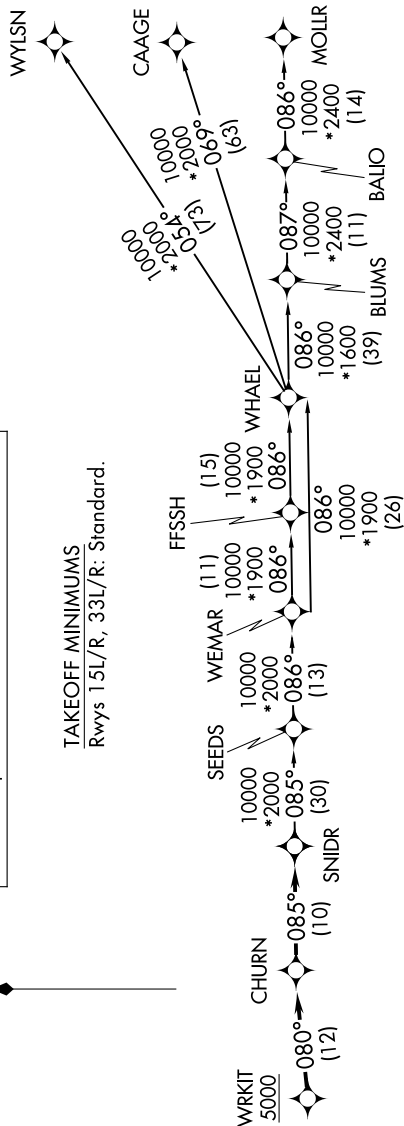
SAN ANTONIO DEP CON
127.1 290.225
ATIS ★
290.525
ATIS (HANGOVER) ★
327.8
CINC DEL (15L-33R)
338.35
GND CON
1119.65 275.8
GND CON (HANGOVER)
124.75 353.75
TOWER ★
128.25 294.7
HANGOVER TOWER ★
120.5 291.1

RNAV 1 - DME/DME/IRU or GPS.

RADAR required for non-GPS equipped aircraft.
RADAR required.

**TOP ALTITUDE:
ASSIGNED BY ATC**

TAKEOFF MINIMUMS
Rwys 15L/R, 33L/R: Standard.

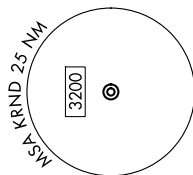
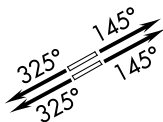


DEPARTURE ROUTE DESCRIPTION

TAKEOFF RUNWAYS 15L/R: Climb on heading 145° or as assigned by ATC, for vectors to WRKIT, thence. . .
TAKEOFF RUNWAYS 33L/R: Climb on heading 325° or as assigned by ATC, for vectors to WRKIT, thence. . .

...on track 080° to CHURN, then on track 085° to SNIDR. Expect filed altitude 10 minutes after departure.

BLUMS TRANSITION (SNIDR2.BLUMS)
CAAGE TRANSITION (SNIDR2.CAAGE)
FFSSH TRANSITION (SNIDR2.FFSSH)
MOLLR TRANSITION (SNIDR2.MOLLR)
SEEDS TRANSITION (SNIDR2.SEEDS)
WEMAR TRANSITION (SNIDR2.WEMAR)
WHAEL TRANSITION (SNIDR2.WHAEL)
WYLSN TRANSITION (SNIDR2.WYLSN)



NOTE: Chart not to scale.

SC-3, 07 AUG 2025 to 04 SEP 2025

SNIDR TWO DEPARTURE (RNAV)

(SNIDR2.SNIDR) 07AUG25

UNIVERSAL CITY, TEXAS
RANDOLPH AFB (KRND)