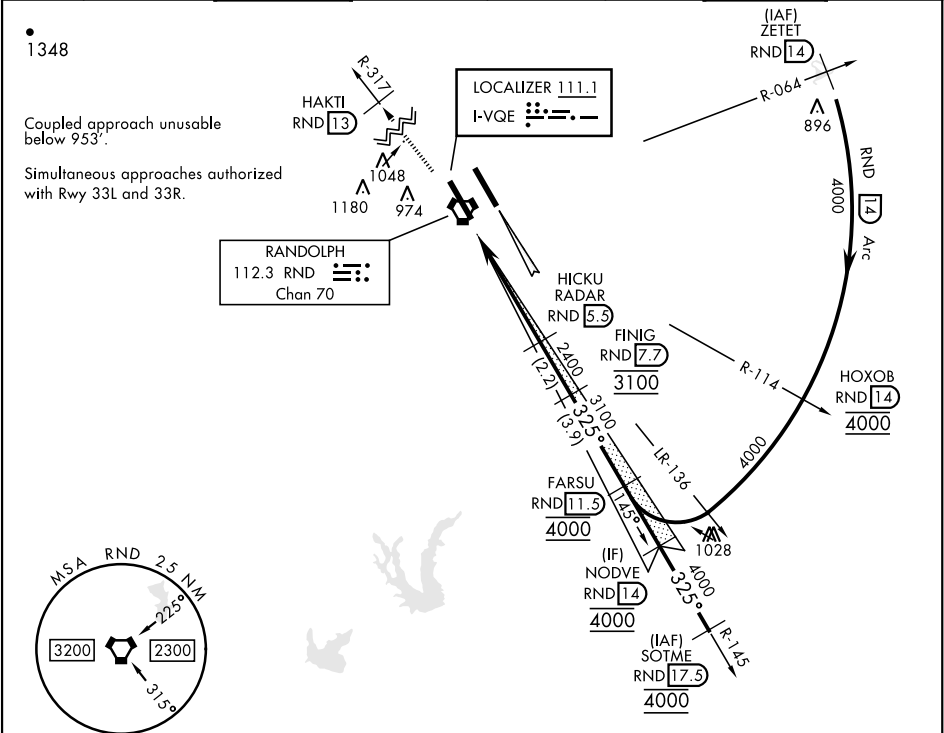


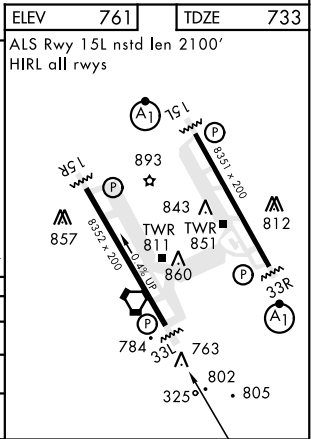
ILS or LOC RWY 33L

LOC I-VQE 111.1	APCH CRS 325°	Rwy Idg TDZE Arprt Elev 8352 733 761	[USAF]		RANDOLPH AFB (KRND)		
RADAR or DME required.			MISSED APPROACH: Climb to 3000 on RND VORTAC R-317 to 13 DME (HAKTI). Expect ATC instructions.				
* Circling not authorized NE of Rwy 15R-33L.							
ATIS★ 290.525	SAN ANTONIO APP CON 128.05 318.1	TOWER★ 128.25 294.7	GND CON 119.65 275.8	CLNC DEL (RWY 15L-33R) 338.35	HANGOVER ATIS★ 327.8	HANGOVER TOWER★ 120.5 291.1	HANGOVER GND CON 124.75 353.75



EMERG SAFE ALT 100 NM 4100

3000 RND R-317	HAKTI RND 13	HICKU RADAR RND 5.3	FINIG RND 7.7	FARSU RND 11.5	NODVE RND 14
WAPOP RND 1		3100	325°	4000	4000
0.6 NM		4.5 NM	2400	GS 3.00°	TCH 47
CATEGORY	A	B	C	D	E
S-ILS 33L	933/40		200	(200-¾)	
S-LOC 33L	1080/55		347	(400-1)	
CIRCLING*	1240-1 479 (500-1)	1280-1 519 (600-1)	1500-2 739 (800-2)	2000-3	1239 (1300-3)



ILS or LOC RWY 33L

SC-3, 07 AUG 2025 to 04 SEP 2025

SC-3, 07 AUG 2025 to 04 SEP 2025