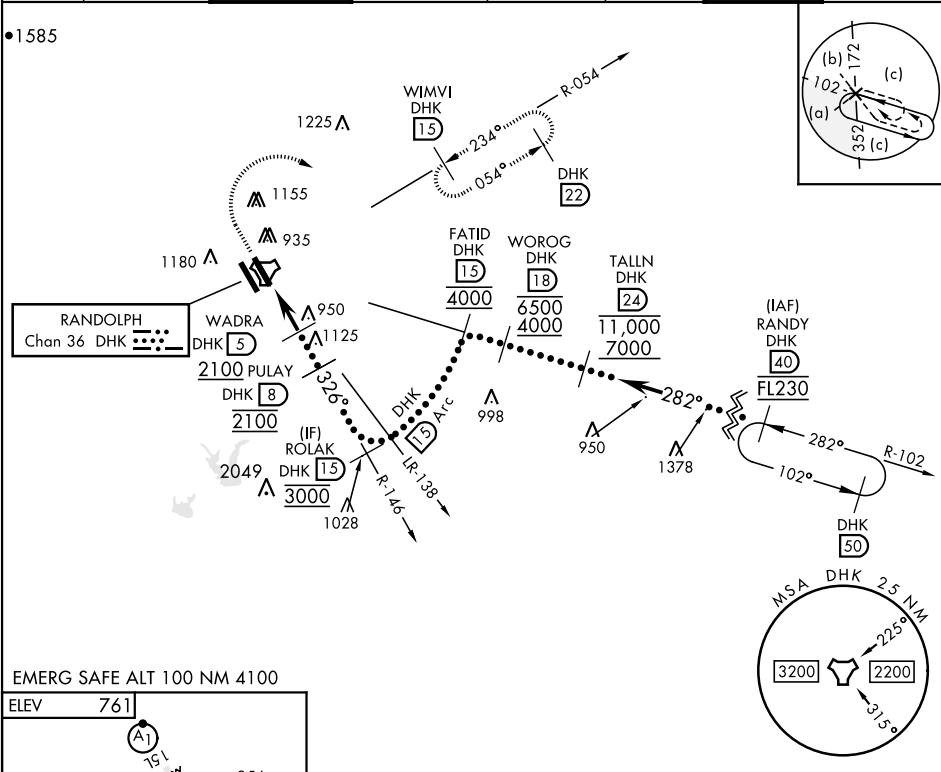


UNIVERSAL CITY, TEXAS

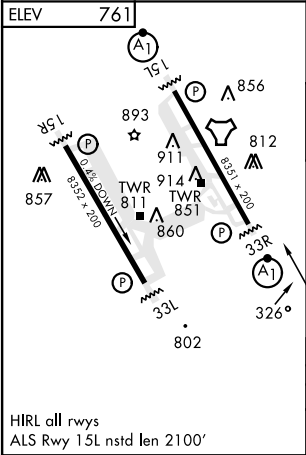
HI-TACAN B

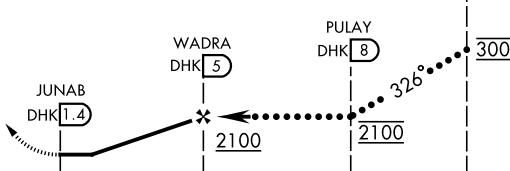
TACAN DHK Chan 36		APCH CRS 326°		Rwy ldg TDZE Arpt Elev N/A N/A 761		[USAF]		RANDOLPH AFB (KRND)		
RADAR required for missed approach monitoring						MISSED APPROACH: Track 327° to 1500, then climbing right turn heading 084° to 3000. Intercept DHK TACAN R-054 direct WIMVI and hold.				
* Circling not authorized SW of Rwy 15L-33R.										
ATIS ★	SAN ANTONIO APP CON		TOWER ★		GND CON		CLNC DEL (RWY 15L-33R)	HANGOVER ATIS ★	HANGOVER TOWER ★	HANGOVER GND CON
290.525	128.05 318.1		128.25 294.7		119.65 275.8		338.35	327.8	120.5 291.1	124.75 353.75

•1585



EMERG SAFE ALT 100 NM 4100



1500	3000	DHK R-054	WIMVI DHK 15
↑ tr 327°	↗ hdg 084°		
			
CATEGORY	C	D	E
CIRCLING*	1260-1½ 499 (500-1½)	1900-3	1139 (1200-3)