

UNIVERSAL CITY, TEXAS

HI-TACAN A

TACAN DHK Chan <b>36</b>	APCH CRS <b>144°</b>	Rwy Idg <b>N/A</b> TDZE <b>N/A</b> Arpt Elev <b>761</b>
-----------------------------	-------------------------	---

[USAF]

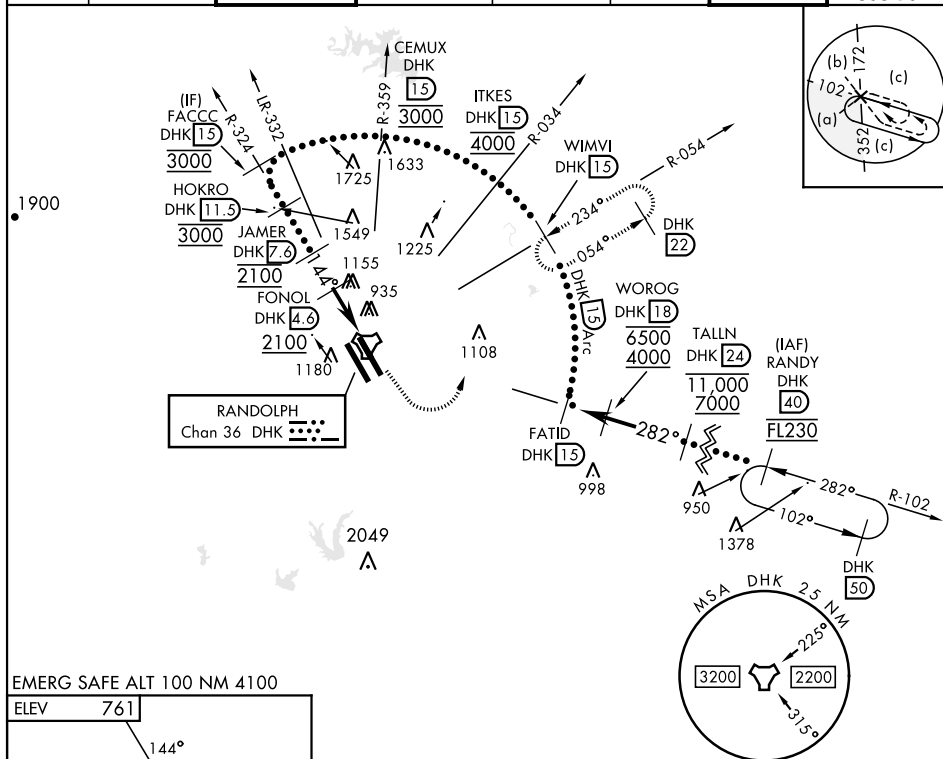
RANDOLPH AFB (KRND)

### RADAR required for missed approach monitoring

**MISSED APPROACH:** Track heading 145° to 1500. Then climbing left turn heading 024° to 3000. Intercept DHK TACAN R-054 to WIMVI and hold.

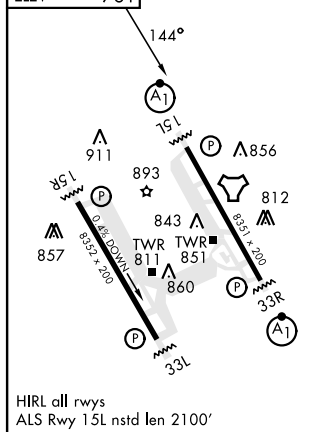
\* Circling not authorized SW of Rwy 15L-33R.

ATIS★	SAN ANTONIO APP CON	TOWER ★	GND CON	CLNC DEL (RWY 15L-33R)	HANGOVER ATIS ★	HANGOVER TOWER ★	HANGOVER GND CON
290.525	128.05 318.1	128.25 294.7	119.65 275.8	338.35	327.8	120.5 291.1	124.75 353.75

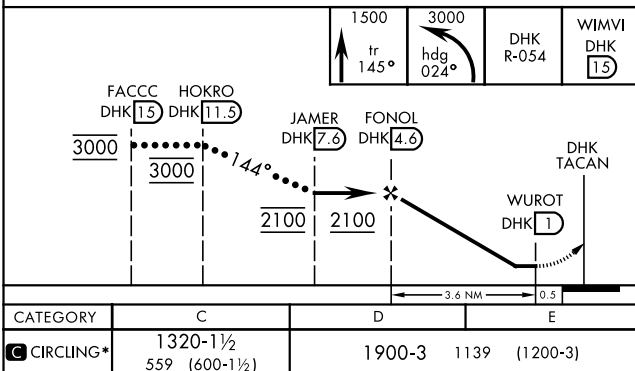


EMERG SAFE ALT 100 NM 4100

ELEV	761
------	-----



HIRL all rwys  
ALS Rwy 15L nstd len 2100'



UNIVERSAL CITY, TEXAS

29°32'N-98°17'W

RANDOLPH AFB (KRND)

Amdt 7 20FEB25

# HI-TACAN A

SC-3, 07 AUG 2025 to 04 SEP 2025

SC-3, 07 AUG 2025 to 04 SEP 2025