

LOC I-TRT <u>109.9</u>	APCH CRS 145°	Rwy Idg 8351 TDZE 742 Arpt Elev 761
----------------------------------	-------------------------	--

RANDOLPH AFB (KRND)

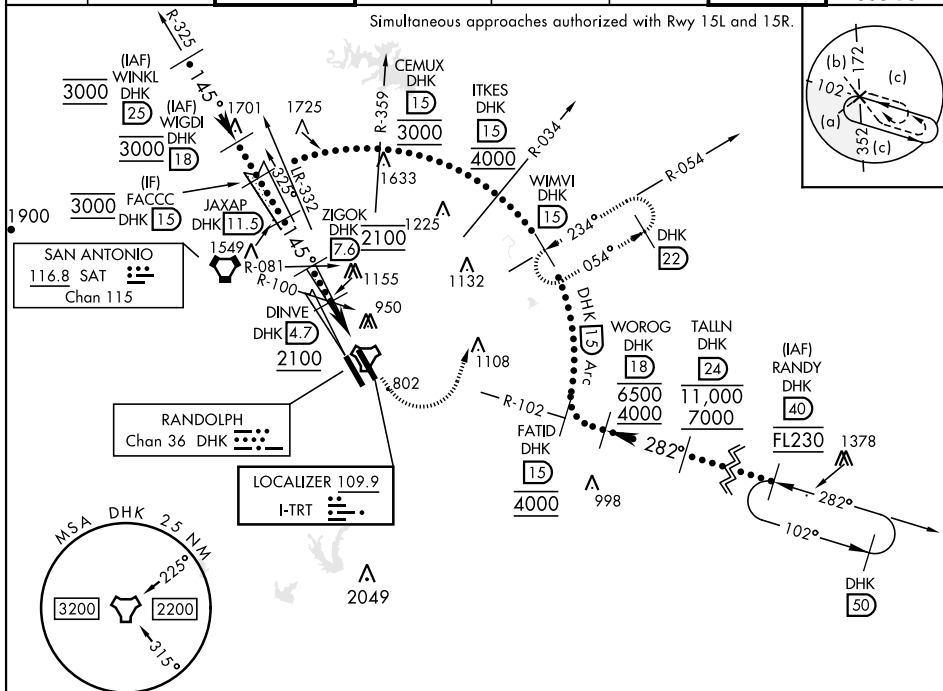
ALSF-1

MISSED APPROACH: Climb to 1500, then climbing left turn heading 024° to 3000, intercept DHK TACAN R-054 to WIMV and hold.

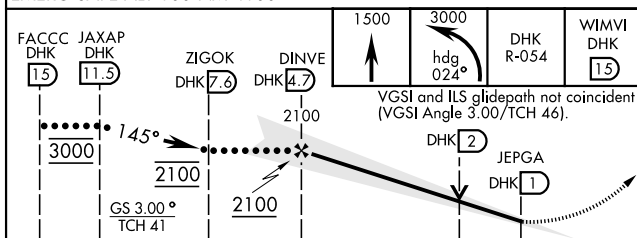
**** Circling NA SW of Rwy 15L-33R.**

ATIS ★	SAN ANTONIO APP CON	TOWER ★	GND CON	CLNC DEL (RWY 15L-33R)	HANGOVER ATIS ★	HANGOVER TOWER ★	HANGOVER GND CON
290.525	128.05 318.1	128.25 294.7	119.65 275.8	338.35	327.8	120.5 291.1	124.75 353.75

Simultaneous approaches authorized with Rwy 15L and 15R.



EMERG SAFE ALT 100 NM 4100



CATEGORY	C	D	E
S-ILS 15L	942/40	200	(200-¾)
S-LOC 15L *	1260-1¼	518	(500-1¼)
C CIRCLING **	1260-1½ 499 (500-1½)	1900-3	1139 (1200-3)

ELEV	761		TDZE		742
FAF to MAP 3.7 NM					
Knots	120	140	160	180	200
Min:Sec	1:51	1:35	1:23	1:14	1:07

29°32'N-98°17'W

RANDOLPH AFB (KRND)

Amdt 3 20FEB25

HI-ILS or LOC Z RWY 15L