

## RNAV (GPS) RWY 2

APCH CRS 026°	Rwy Idg 4250 TDZE 9 Arpt Elev 10
------------------	--

- (USN)

QUANTICO MCAF (TURNER FLD) (KNYG)

RNP APCH

**T** \* Circling not authorized W of Rwy 2-20.

**MISSED APPROACH:** Climb to 600, then climbing right turn to 2000 direct BRV VORTAC and hold.

ATIS★ 263.15	POTOMAC APP CON/DEP CON 128.525 306.925	TOWER★ 118.6 (CTAF) 0 360.2	GND CON 121.75 348.7	ASR
-----------------	--	--------------------------------	-------------------------	-----

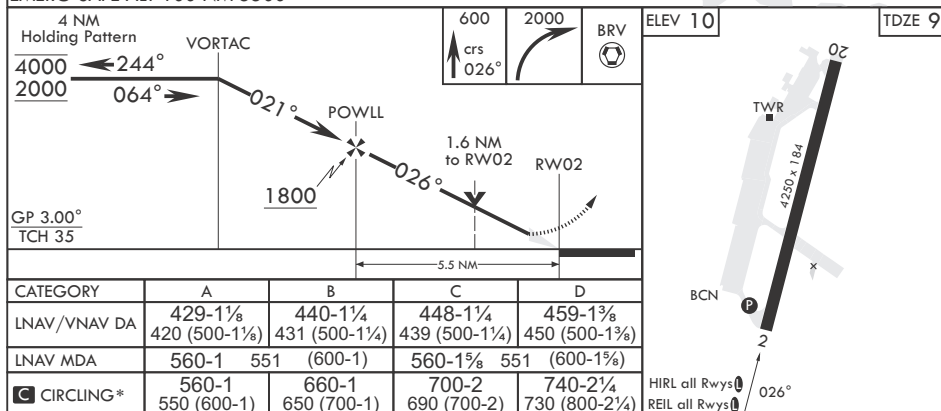
476

For uncompensated  
Baro-VNAV systems,  
LNAV/VNAV NA below -15°C  
(5°F) or above 54°C (130°F).

Wheel crossing height  
Group 3: 15 ft;  
Group 4: 10 ft (is less  
than the minimum height).



EMERG SAFE ALT 100 NM 5500



## RNAV (GPS) RWY 2