

ILS or LOC/DME RWY 2

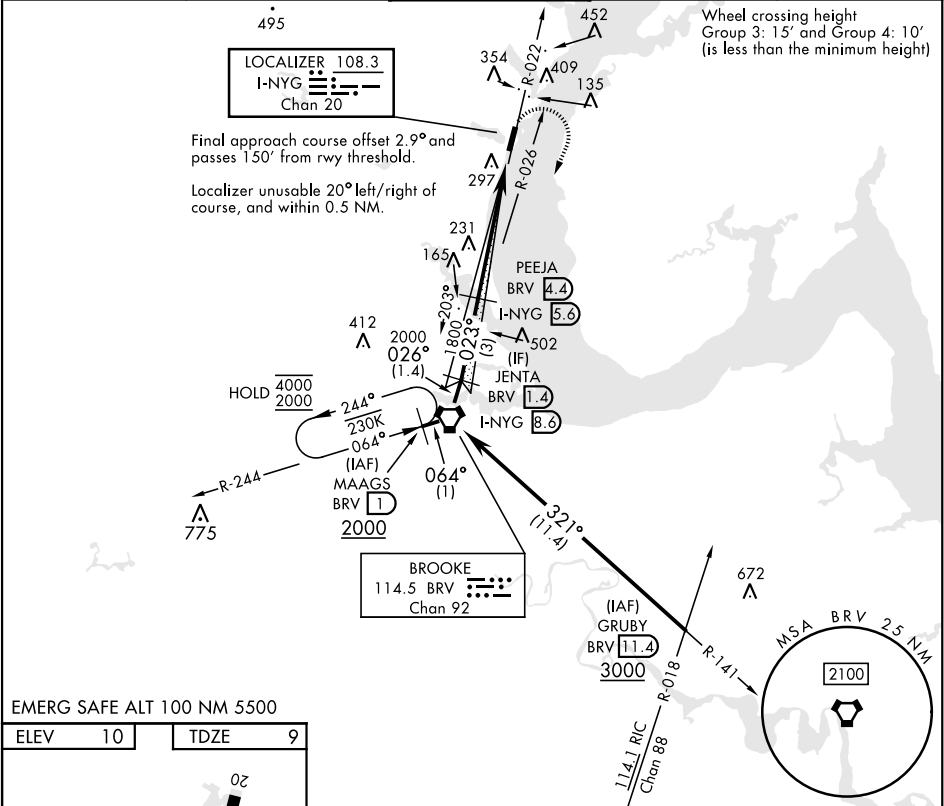
LOC/DME I-NYG <b>108.3</b> Chan <b>20</b>	APCH CRS <b>023°</b>	Rwy Idg TDZE Arpt Elev <b>4250</b> <b>9</b> <b>10</b>
---	-------------------------	--

[USN]

QUANTICO MCAF (TURNER FLD) (KNYG)

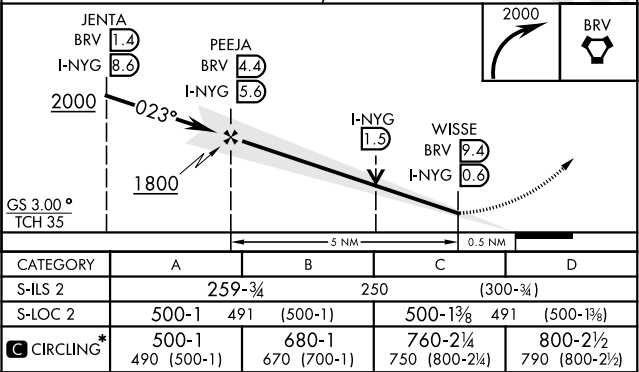
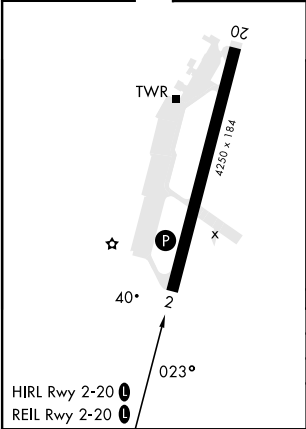
TACAN required. * Circling not authorized W of Rwy 2-20.	MISSED APPROACH: Climbing right turn to 2000 direct BRV VORTAC, then via BRV R-244 to MAGGS and hold.
---	---

ATIS <b>263.15</b>	POTOMAC APP/DEP CON <b>128.525 306.925</b>	TOWER ★ <b>118.6 (CTAF) 0360.2</b>	GND CON <b>121.75 348.7</b>	ASR
-----------------------	---	---------------------------------------	--------------------------------	-----



EMERG SAFE ALT 100 NM 5500

ELEV	10	TDZE	9
------	----	------	---



ILS or LOC/DME RWY 2