



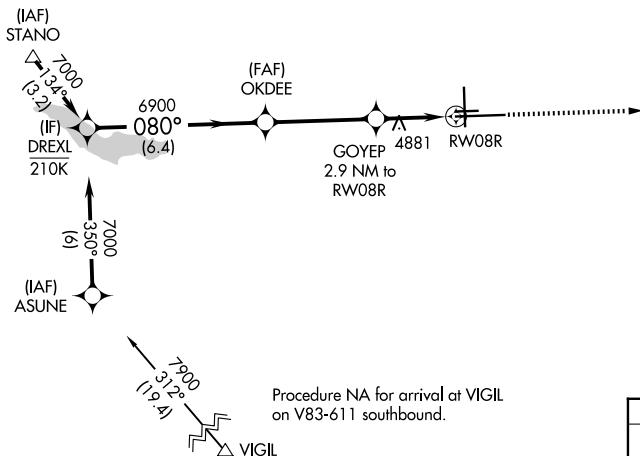
WAAS CH 70531 W08A	APP CRS 080°	Rwy Ldg 10496 TDZE 4671 Apt Elev 4729
----------------------------------------	------------------------	------------------------------------------------------------------

RNAV (GPS) RWY 8R
PUEBLO MEML (PUB)

RNP APCH-GPS.				 For uncompensated Baro-VNAV systems, LNAV/VNAV NA below -22°C or above 54°C. For inop ALS, increase LNAV/VNAV visibility to 7% SM.		 MALSR		MISSED APPROACH: Climb to 7000 direct HELER and hold.	
ATIS 125.25		DENVER APP CON ★ 120.1 290.5		PUEBLO TOWER ★ 119.1 (CTAF) 0 257.8		GND CON 121.9		CLNC DEL 120.9	UNICOM 122.95

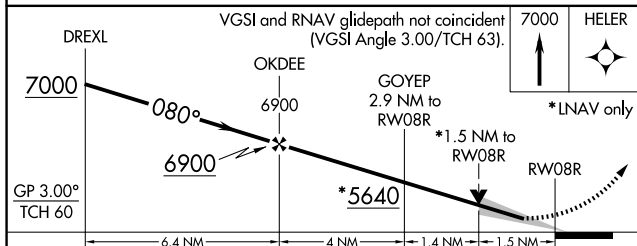
R-2601A & B

Procedure NA for arrivals at STANO
on V244 westbound.

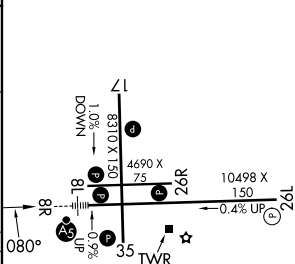


Procedure NA for arrival at VIGIL
on V83-611 southbound.

ELEV 4729	D	TDZE 4671
-----------	----------	-----------



CATEGORY		A	B	C	D
LPV	DA	4871-1/2 200 (200-1/2)			
LNAV/ VNAV	DA	4982-1/2 311 (300-1/2)			
LNAV	MDA	5200-1/2 529 (500-1/2)	5200-1 529 (500-1)		
CIRCLING		5340-1 611 (700-1)	5580-2 1/2 851 (900-2 1/2)	5800-3 1071 (1100-3)	



HIRL Rwy 8R-26L **L**
MIRL Rwy 17-35 and 8L-26R **L**
REIL Rwy 8L, 17, 26L, 26R and 35 **L**